

# 2-POST LIFT

## ELECTRO-HYDRAULIC

The electro-hydraulic 2-post lifts of the SPO55 series convince with an outstanding pick-up area, they are particularly suitable for van workplaces. There are 4 different post heights to choose from.

**+ SPO series - the best-selling lift in the world**  
**+ Maximum security with the Rotary 3PSS concept**  
**+ Pick-up range from passenger vehicle to van**

Flanged to the upper part of the lifting column, the unit is protected from external influences and allows more freedom of movement.

The double S-profile of the lifting posts enables maximum stability with minimum space requirement. The contact area of the lifting carriages guided in the lifting posts is significantly increased too.

The support arms are automatically locked when lifting. Once the platform is completely lowered, this locking device is released automatically. The particularly fine grid and a manual unlocking function extend the ease of operation.

The upper safety switch-off effectively protects vehicles with a higher overall height from damage during lifting.

The electro-hydraulic design with only one unit ensures energy-saving operation with fast lifting and lowering times.

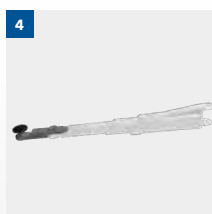
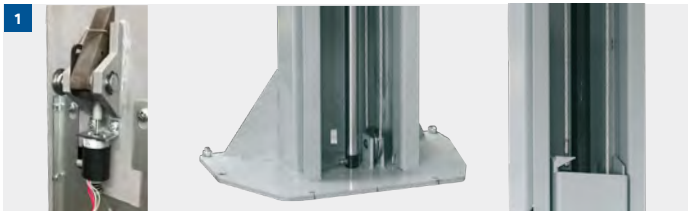
Rotary Hydraulic stands for maximum service-friendliness with minimum operating costs.

For a plus in ergonomics and economy, the 2nd A control panel is standard on the SPO55. One control unit is equipped with a 220 V connection (fused with 16 ampere for electric hand tools) and the second with compressed air preparation.

The rotating plates are pluggable and can be extended or replaced with attachments in a stable and cost-effective manner.

Illustration shows SPO55E with optional accessories.

## HIGHLIGHTS IN DETAIL



### 1 The 3PSS concept (3 Phase Security System) includes:

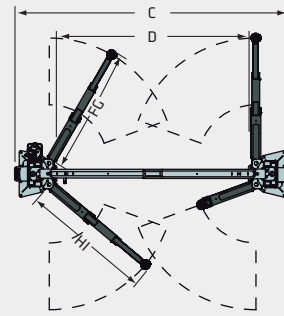
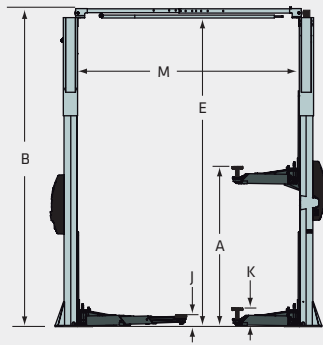
- Mechanical safety latches integrated on both sides with automatic actuation
- Load-free synchronization pulleys secure the load during the lifting and lowering process
- Hydraulic system secured by non-return valve including maintenance-free high-pressure cylinder in both posts.

### 2 The well-conceived support arm construction allows both symmetrical and asymmetrical pick-up of the vehicles - without repositioning.

### 3 The maximum drive-through width with minimum external dimensions and the construction without a base frame ensure problem-free access to the lifting platform.

### 4 By using the optional AE250 support arm extension, long vans can also be picked up at the points recommended by the manufacturer.

## SP055E



Model	SP055E-GR	SP055E-EH1GR	SP055E-EH2GR	SP055E-EH4GR
Load capacity	5.500 kg	5.500 kg	5.500 kg	5.500 kg
<b>A</b> Stroke	1.985 mm	1.985 mm	1.985 mm	1.985 mm
<b>B</b> Overall height	4.170 mm	4.475 mm	4.780 mm	5.410 mm
<b>C</b> Overall width	3.496 mm	3.496 mm	3.496 mm	3.496 mm
<b>D</b> Drive-through width	2.613 mm	2.613 mm	2.613 mm	2.613 mm
<b>E</b> Switchoff level	4.026 mm	4.331 mm	4.636 mm	5.266 mm
<b>F</b> Support bracket length on the front min.	790 mm	790 mm	790 mm	790 mm
<b>G</b> Support bracket length on the front max.	1.700 mm	1.700 mm	1.700 mm	1.700 mm
<b>H</b> Support bracket length on the rear min.	790 mm	790 mm	790 mm	790 mm
<b>I</b> Support bracket length on the rear max.	1.700 mm	1.700 mm	1.700 mm	1.700 mm
<b>J</b> Rotary plate height min.	119 mm	119 mm	119 mm	119 mm
<b>K</b> Rotary plate height max.	181 mm	181 mm	181 mm	181 mm
<b>M</b> Clear span between	2.899 mm	2.899 mm	2.899 mm	2.899 mm
Driving power	3 kW	3 kW	3 kW	3 kW
Power supply voltage (electrical)	230/400 V, 50 Hz	230/400 V, 50 Hz	230/400 V, 50 Hz	230/400 V, 50 Hz
Lifting time	approx. 60 sec.	approx. 60 sec.	approx. 60 sec.	approx. 60 sec.
Required ceiling height	4.220 mm	4.525 mm	4.830 mm	5.460 mm

## ACCESSORIES



- 1** Rotary plate extension kit, 4 x 89mm, 4 x 127mm, incl. 2 brackets for mounting to the posts
- 2** Rotary plate extension kit, 4 x 200 mm, incl. bracket for mounting to the posts
- 3** Storage tray for tools (magnetic), 240 x 140 mm
- 4** Vehicle securing for rotary plate, ø 120 mm
- 5** Mounting kit, for delivery/small vans, 4 x U-pick-up
- 6** Mounting kit, 2x for Sprinter/Crafter (mandrel short in front)
- 7** Vehicle safety catch adapter FJ6210C (1 kit/ 2 pieces) for rotary plate ø 120mm (1 kit/ 2 pieces)
- 8** Support arm extension kit, 250 mm
- 9** Mounting kit, for Mercedes G series