

TWO-POST LIFTS

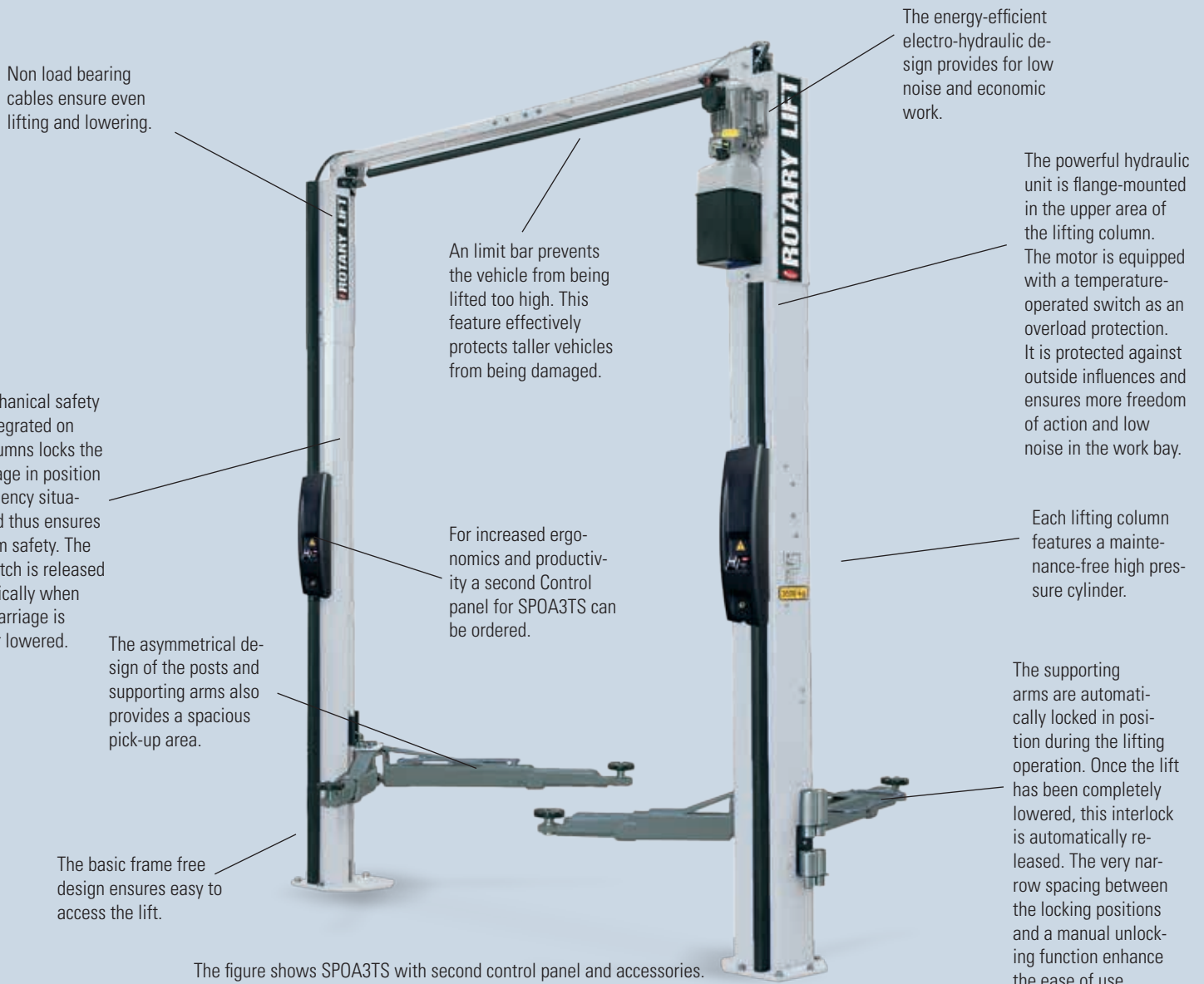
SPOA3T

SPO40/54/55/65



SPOA3T

THE SPOA3T 2-POST LIFTS OFFER MAXIMUM DRIVE-THROUGH CLEARANCE WITH MINIMUM EXTERNAL DIMENSIONS. THE ASYMMETRICAL DESIGN OF THE POSTS AND SUPPORTING ARMS ALSO PROVIDES A SPACIOUS PICK-UP AREA.



DETAILS

AP Version

3-piece support arm design for short wheelbases an small ground clearance - perfect for sports cars.

AF Version

3-piece support arm design with ergonomic FastFit mounting points. The perfect solution when something has to be done quickly.

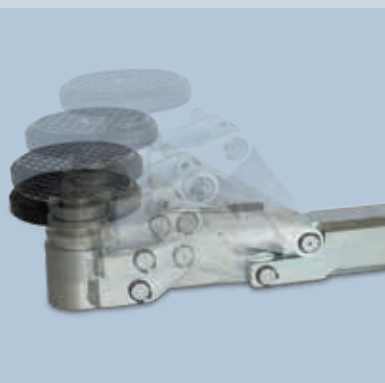
CONTROLLER VERSIONS

Manual control

- Conventional operation using one hand
- Manual lock release.

Electrical control

- Single-hand operating unit on both lifting columns possible.
- Elect. triggered safety latches.
- Lifting and lowering with pushbuttons.
- Integrated 220 V connection and prepared for compressed air connection at 2nd panel (SOA3TS)



Supporting arms

Asymmetric
2x3-piece, short (front)
2x2-piece, long (behind)

Asymmetric
4x3-piece

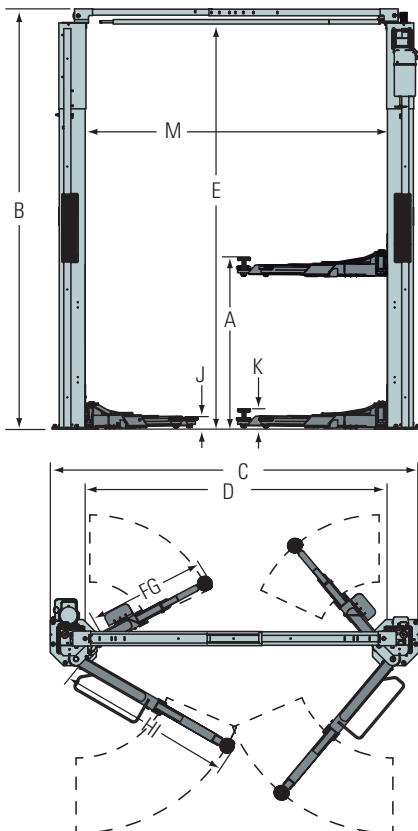
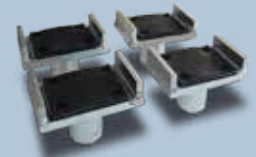
Asymmetric
4x3-piece
incl. FastFit

Model	SPOA3TM-5	SPOA3TS-5	SPOA3TM-5AP	SPOA3TS-5AP	SPOA3TM-5AF	SPOA3TS-5AF
Capacity	3500 kg	3500 kg	3500 kg	3500 kg	3500 kg	3500 kg
A. Stroke	1957 mm	1957 mm	1957 mm	1957 mm	1957 mm	1957 mm
B. Overall height EH1	3865 mm	3865 mm	3865 mm	3865 mm	3865 mm	3865 mm
Overall height EH2	4170 mm	4170 mm	4170 mm	4170 mm	4170 mm	4170 mm
C. Overall width	3000 mm	3000 mm	3200 mm	3200 mm	3000 mm	3000 mm
D. Drive through clearance	2336 mm	2336 mm	2336 mm	2336 mm	2336 mm	2336 mm
E. Switchoff level EH1	3760 mm	3760 mm	3760 mm	3760 mm	3760 mm	3760 mm
Switchoff level EH2	4065 mm	4065 mm <td 4065 mm	4065 mm	4065 mm	4065 mm	
F. Support bracket length front min.	550 mm	550 mm	550 mm	550 mm	550 mm	550 mm
G. Support bracket length front max.	1106 mm	1106 mm	1106 mm	1106 mm	1106 mm	1106 mm
H. Support bracket length rear min.	876 mm	876 mm	600 mm	600 mm	785 mm	785 mm
I. Tragarmlänge hinten max.	1472 mm	1472 mm	1280 mm	1280 mm	1330 mm	1330 mm
J. Rotary plate height min.	96 mm	96 mm	95 mm	94 mm	110 mm	110 mm
K. Rotary plate height max.	153 mm	153 mm	155 mm	155 mm	155 mm	155 mm
M. Column spacing, interior dimension	2560 mm	2560 mm	2760 mm	2760 mm	2760 mm	2760 mm
Motor performance	4,0 kW	4,0 kW	4,0 kW	4,0 kW	4,0 kW	4,0 kW
Electrical connection (3 phases)	400 V, 50 Hz	400 V, 50 Hz	400 V, 50 Hz	400 V, 50 Hz	400 V, 50 Hz	400 V, 50 Hz
Lifting time	ca. 30 sec.	ca. 30 sec.	ca. 30 sec.	ca. 30 sec.	ca. 30 sec.	ca. 30 sec.
Required ceiling height EH1	3920 mm	3920 mm	3920 mm	3920 mm	3920 mm	3920 mm
Required ceiling height EH1	4230 mm	4230 mm	4230 mm	4230 mm	4230 mm	4230 mm



- M** Manual control
- S** Electrical control

Support kit for delivery trucks/vans
(4 x U-support),
Item No. FJ6173



ACCESSORIES

Vehicle security for rotary plate with
120 mm diameter,
Item No. FS6353-1



Rotary adaptor extension kit for
passenger cars (4 x 89 mm, 4 x
127 mm),
Item No. FJ6199



Tool storage trays, magnetic,
Item No. FA5921

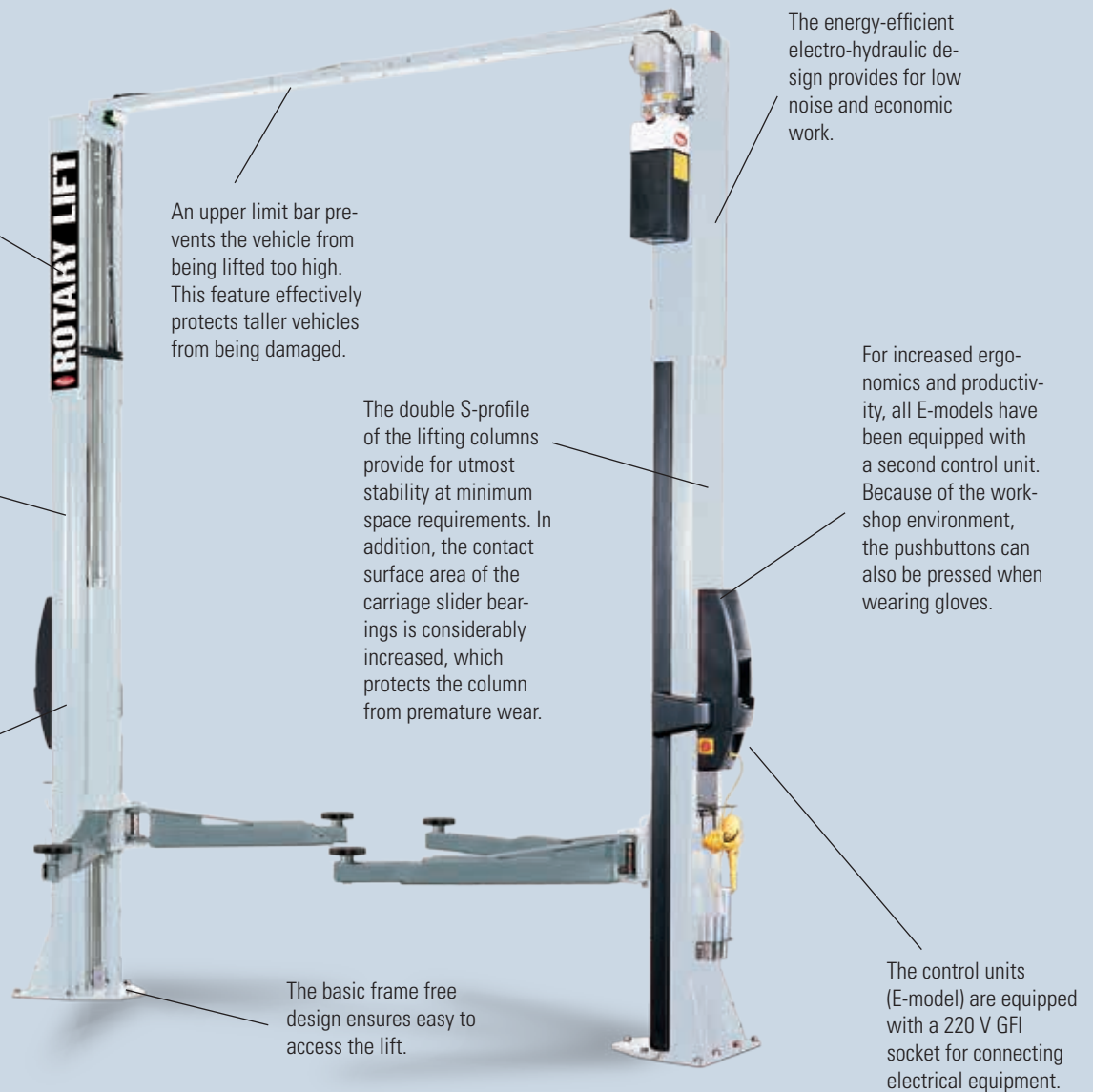


New manual control options for
3 t lift SPOA3TS,
Item No. CONTROL-SPOA3TC-N



SPOA40, SPO40

ELECTRO-HYDRAULIC TWO-POST LIFTS OF THE SPO SERIES CAN BE TAILORED PERFECTLY TO FIT THE APPLICATION AND CAN BE COMBINED WITH UP TO THREE DIFFERENT COLUMN HEIGHTS. THERE ARE ONE MANUAL AND ONE ELECTRICAL CONTROLLER VERSIONS TO CHOOSE FROM.



Non load bearing cables ensure even lifting and lowering.

An upper limit bar prevents the vehicle from being lifted too high. This feature effectively protects taller vehicles from being damaged.

The energy-efficient electro-hydraulic design provides for low noise and economic work.

Each lifting column features a maintenance-free high pressure cylinder.

The double S-profile of the lifting columns provide for utmost stability at minimum space requirements. In addition, the contact surface area of the carriage slider bearings is considerably increased, which protects the column from premature wear.

For increased ergonomics and productivity, all E-models have been equipped with a second control unit. Because of the workshop environment, the pushbuttons can also be pressed when wearing gloves.

The mechanical safety latch integrated on both columns locks the lift carriage in position in emergency situations and thus ensures maximum safety.

The basic frame free design ensures easy to access the lift.

The control units (E-model) are equipped with a 220 V GFI socket for connecting electrical equipment.

The figure shows SPO40E with optional accessories.

DETAILS

The supporting arms are automatically locked in position during the lifting operation. Once the lift has been completely lowered, this interlock is automatically released. The very narrow spacing between the locking positions and a manual unlocking function enhance the ease of use.

AP Version

3-piece support arm design with ergonomic FastFit mounting points. The perfect solution when something has to be done quickly.

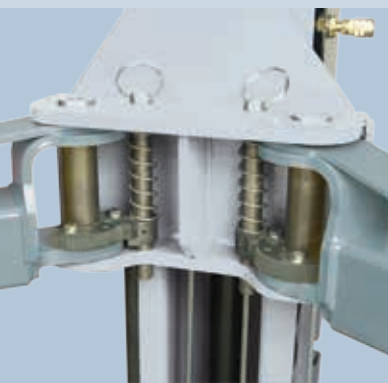
CONTROLLER VERSIONS

Manual control

- Conventional operation using two hands
- Manual lock release.

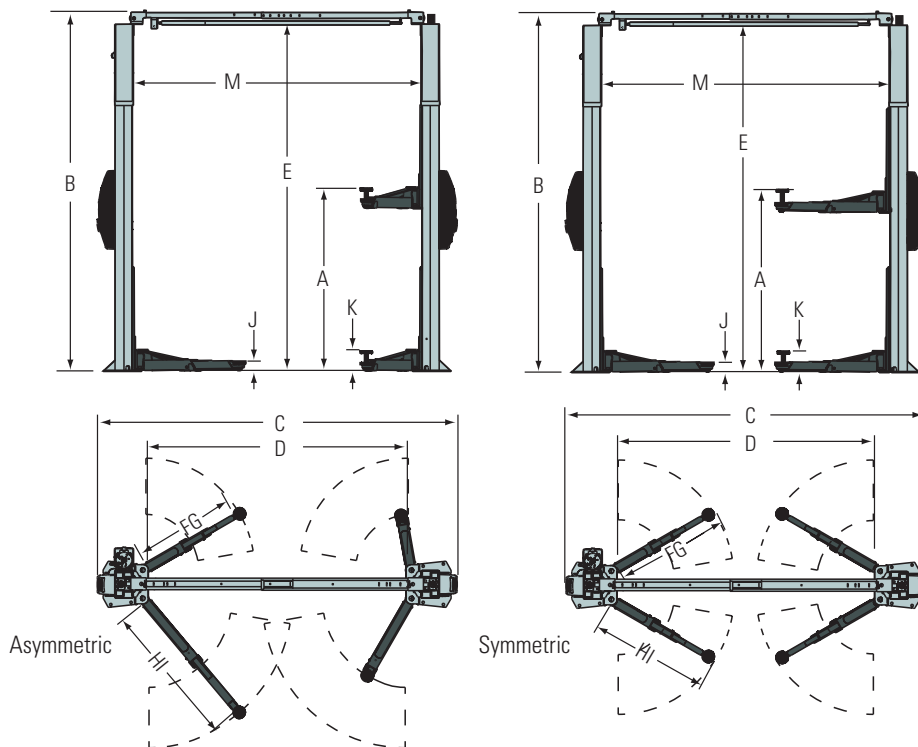
Electrical control

- Single-hand operating unit on both lifting columns.
- Electrically triggered safety latches.
- Lifting and lowering with pushbuttons, one control unit with integrated 220 V connection, and the other panel prepared for compressed air connection.



Supporting arms	Asymmetric 2x3-piece, short (front) 2x2-piece, long (behind)		Symmetric 2x3-piece, short (front) 2x2-piece, long (behind)		Asymmetric 4x3-piece	
Model	SPOA40M-5	SPOA40E-5	SPO40M-5	SPO40E-5	SPOA40M-5AP	SPOA40E-5AP
Capacity	4500 kg	4500 kg	4500 kg	4500 kg	4500 kg	4500 kg
A. Stroke	1957 mm	1957 mm	1979 mm	1979 mm	1957 mm	1957 mm
B. Overall height EH1	3865 mm	3865 mm	3865 mm	3865 mm	3865 mm	3865 mm
Overall height EH2	4170 mm	4170 mm	4170 mm	4170 mm	4170 mm	4170 mm
Overall height EH4	-	-	4780 mm	4780 mm	-	-
C. Overall width (Outside of base plate)	3440 mm	3440 mm	3496 mm	3496 mm	3440 mm	3440 mm
D. Drive through clearance	2546 mm	2546 mm	2602 mm	2602 mm	2546 mm	2546 mm
E. Switchoff level EH1	3760 mm	3760 mm	3760 mm	3760 mm	3760 mm	3760 mm
Switchoff level EH2	4065 mm	4065 mm	4065 mm	4065 mm	4065 mm	4065 mm
Switchoff level EH4	-	-	4675 mm	4675 mm	-	-
F. Support bracket length on the front min.	550 mm	550 mm	700 mm	700 mm	550 mm	550 mm
G. Support bracket length on the front max.	1106 mm	1106 mm	1500 mm	1500 mm	1106 mm	1106 mm
H. Support bracket length on the rear min.	879 mm	879 mm	700 mm	700 mm	879 mm	879 mm
I. Support bracket length on the rear max.	1475 mm	1475 mm	1500 mm	1500 mm	1475 mm	1475 mm
J. Rotary plate height min.	96 mm	96 mm	109 mm	109 mm	96 mm	96 mm
K. Rotary plate height max.	159 mm	159 mm	179 mm	179 mm	159 mm	159 mm
M. Column spacing, interior dimension	2825 mm	2825 mm	2916 mm	2916 mm	2825 mm	2825 mm
Motor performance	4 kW	4 kW	4 kW	4 kW	4 kW	4 kW
Electrical connection (3 phases)	230/400 V, 50 Hz	400 V, 50 Hz	230/400 V, 50 Hz	400 V, 50 Hz	230/400 V, 50 Hz	400 V, 50 Hz
Lifting time	ca 30 sec.	ca 30 sec.	ca 30 sec.	ca 30 sec.	ca 30 sec.	ca 30 sec.
Required ceiling height EH1	3920 mm	3920 mm	3920 mm	3920 mm	3920 mm	3920 mm
Required ceiling height EH2	4230 mm	4230 mm	4230 mm	4230 mm	4230 mm	4230 mm
Required ceiling height EH4	-	-	4840 mm	4840 mm	-	-

M Manual control
E Electrical control



ACCESSORIES

Rotary adaptor extension kit for passenger cars (4 x 89 mm, 4 x 127 mm),
Item No. FJ7880BK



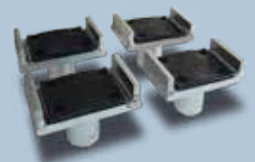
Rotary adaptor extension kit for delivery trucks/vans (4 x 200 mm),
Item No. FJ6172



Vehicle security for rotary plate with 120 mm diameter,
Item No. FS6353-1



Support kit for delivery trucks/vans (4 x U-support),
Item No. FJ6173

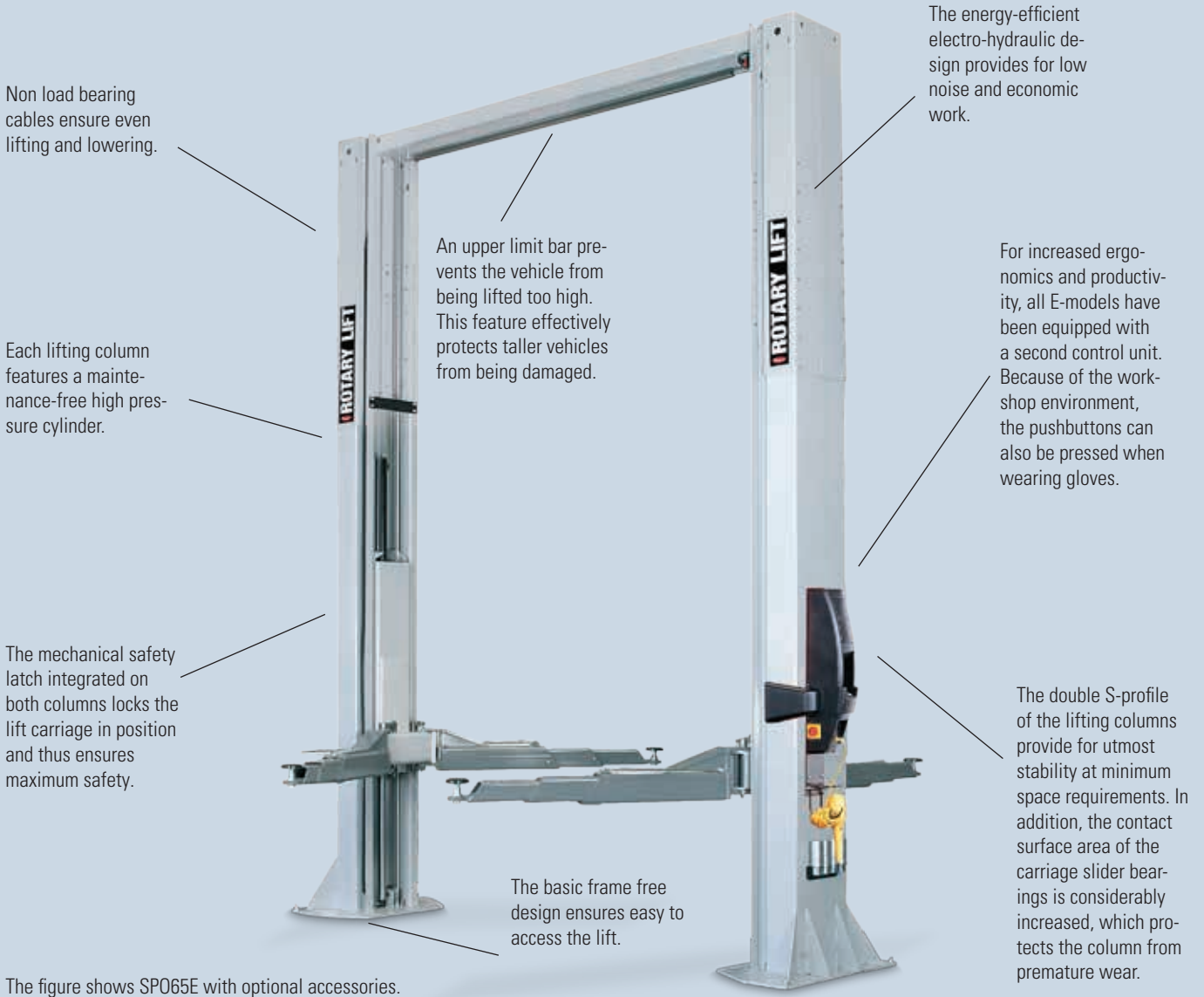


Tool storage trays, magnetic,
Item No. FA5921



SPO54/55/65

ON ACCOUNT OF THEIR HIGH LOAD BEARING CAPACITY THE SPO54 AND THE NEW SPO65 ARE ESPECIALLY SUITABLE FOR LIGHT-DUTY COMMERCIAL VEHICLES – THE SPO65 ESPECIALLY FOR VEHICLES WITH A LONG WHEELBASE (E.G. MERCEDES-BENZ SPRINTER AND VOLKSWAGEN CRAFTER). THE SPO54/SPO65 ARE EQUIPPED WITH TWO CONTROLLING UNITS.



Non load bearing cables ensure even lifting and lowering.

Each lifting column features a maintenance-free high pressure cylinder.

The mechanical safety latch integrated on both columns locks the lift carriage in position and thus ensures maximum safety.

An upper limit bar prevents the vehicle from being lifted too high. This feature effectively protects taller vehicles from being damaged.

The basic frame free design ensures easy to access the lift.

The energy-efficient electro-hydraulic design provides for low noise and economic work.

For increased ergonomics and productivity, all E-models have been equipped with a second control unit. Because of the workshop environment, the pushbuttons can also be pressed when wearing gloves.

The double S-profile of the lifting columns provide for utmost stability at minimum space requirements. In addition, the contact surface area of the carriage slider bearings is considerably increased, which protects the column from premature wear.

The figure shows SPO65E with optional accessories.

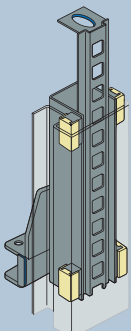
DETAILS

The lift carriage bearings are made of self-lubricating and absolutely maintenance-free Tivar® 1000 polyethylene. Two characteristics that help reduce operating expenses considerably.

The supporting arms are automatically locked in position during the lifting operation. Once the lift has been completely lowered, this interlock is automatically released. The very narrow spacing between the locking positions and a manual unlocking function enhance the ease of use.

Electrical control

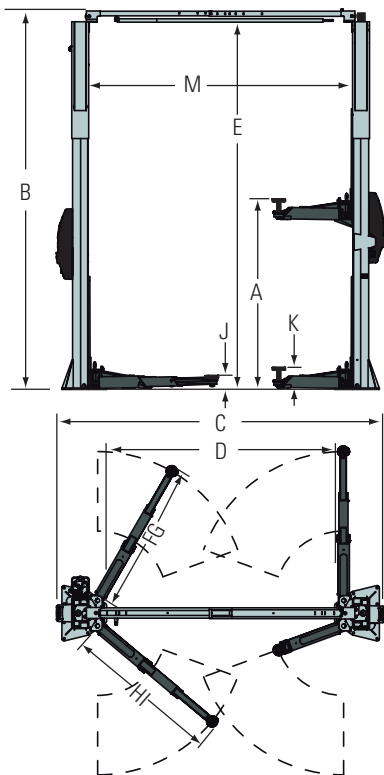
- Single-hand operating unit on both lifting columns.
- Electrically controlled safety latches (SPO65 pneumatically).
- Sensitive pushbuttons.
- Integrated 220 V connection, prepared for connecting compressed air.



Supporting arms	Symmetric		
Model	SPO54E	SPO55E	SPO65E-LWB
Capacity	5000 kg	5500 kg	6500 kg
A. Stroke	1985 mm	1985 mm	2005 mm
B. Overall height	4170 mm	4170 mm	4570-5028 mm*
EH1	4475 mm	4475 mm	-
EH2	4780 mm	4780 mm	-
EH4	5410 mm	5410 mm	-
C. Overall width (Outside of base plate)	3496 mm	3496 mm	3937 mm
D. Drive through clearance	2613 mm	2613 mm	2687 mm
Switchoff level	4026 mm	4026 mm	4546-5004 mm*
E. EH1	4331 mm	4331 mm	-
EH2	4636 mm	4636 mm	-
EH4	5266 mm	5266 mm	-
F. Supporting arm length front min.	765 mm	790 mm	935 mm
G. Supporting arm length front max.	1640 mm	1700 mm	1901 mm
H. Supporting arm length rear min.	765 mm	790 mm	935 mm
I. Supporting arm length rear max.	1640 mm	1700 mm	1901 mm
J. Rotary plate height min.	119 mm	119 mm	115 mm
K. Rotary plate height max.	181 mm	181 mm	175 mm
M. Clear size column spacing	2880 mm	2880 mm	3058 mm
Motor performance	3 kW	3 kW	3 kW
Electrical connection (3 phases)	230/400 V, 50 Hz	230/400 V, 50 Hz	230/400 V, 50 Hz
Lifting time	60 sec.	60 sec.	60 sec.
Required ceiling height	4230 mm	4230 mm	4700-5150 mm*
EH1	4530 mm	4530 mm	-
EH2	4840 mm	4840 mm	-
EH4	5470 mm	5470 mm	-

E Electrical control

* can be adjusted every 150 mm



ACCESSORIES

Rotary adaptor extension kit for passenger cars (4 x 89 mm, 4 x 127 mm),
Item No. FJ7880BK (SPO54)



Rotary adaptor extension kit for delivery trucks/vans (4 x 200 mm),
Item No. FJ6172 (SPO54)



Support kit for G-Class
Item No. 120608



Turntable Set for (4 pieces),
Item No. FJ6217MB (SPO65)



Support kit for Sprinter/Crafter
(2 pieces) behind,
Item No. FJ6215MB, (SPO54)
Item No. FJ6215MB + 2x 115684
(SPO65)



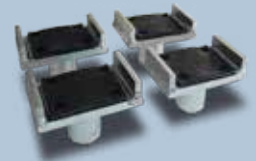
Vehicle security for rotary plate
with 120 mm diameter (2 pieces),
Item No. FS6353-1



Support kit for Sprinter/Crafter
(2 pieces) front,
Item No. FJ6216 (SPO54)



Support kit for delivery trucks/vans
(4 x U-support),
Item No. FJ6173 (SPO54)

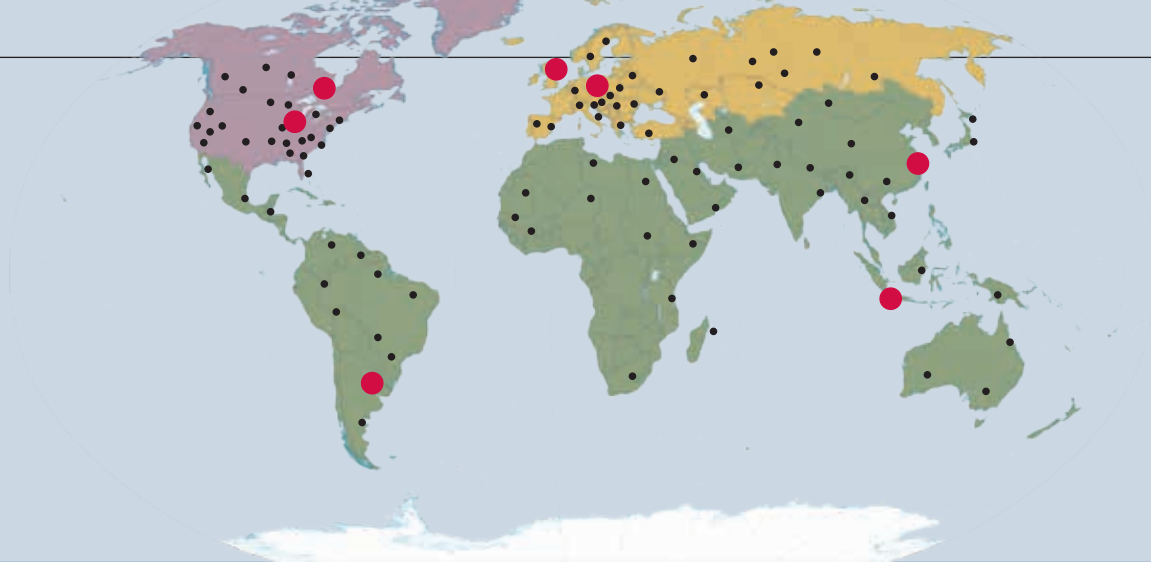


Support kit for Sprinter/Crafter
(2 pieces) front,
Item No. FJ6216MB (SPO65)



Supporting arm extension SPO54,
300mm,
Item No. AE-300





LOOK LOCAL - ACT GLOBAL

WE ACT WITH FOCUS ON OUR CUSTOMERS AND THEIR REQUIREMENTS. LOCAL SUBSIDIARIES WORLDWIDE PERMIT US TO DO SO, AND AT THE SAME TIME, OFFER A HIGH DEGREE OF PRODUCT FLEXIBILITY.

Rotary Lift's story of success started in 1924. Inspired by a barber chair rising in the air, company founder Peter Lunati developed the world's first vehicle lift. The lift could rotate. This design made it possible for vehicles to drive on and off the lift in forward gear. An important argument considering the frequent problem of reversing at that time. The patent for the lift was granted on September 1, 1925 and Rotary Lift – the company – was born.

Over 90 years later, Rotary Lift has grown to become the world leader in vehicle lift productivity. Apart from the headquarters in Madison, Indiana (USA) and the European Control Center in Bräunlingen, Germany, numerous global subsidiaries attend to the desires and requirements of our customers.

With this unique network, Rotary Lift has the opportunity of analyzing and recognizing market trends at an early stage and of applying that knowledge to generate global standards. Worldwide product releases of numerous vehicle manufacturers emphasize this approach.



Headquarter
Madison, IN USA

European Control Center
Bräunlingen, Germany

Rotatable
One of the first lifts of Rotary Lift



BlitzRotary GmbH
info@blitzrotary.com
www.blitzrotary.com

Zentrale
Hüfingen Straße 55
D-78199 Bräunlingen
Fon +49.771.9233.0
Fax +49.771.9233.99

Niederlassung Offenburg
Waltersbündt 3
D-77749 Hohberg-Hofweier
Fon +49.7808.94399.0
Fax +49.7808.94399.19

Niederlassung Bremen
Hinterm Sielhof 22
D-28277 Bremen
Fon +49.421.54906.906
Fax +49.421.54906.19

A DOVER COMPANY

