

# NEW WHEEL BALANCERS PLATFORM

Wave 5 is an electronic Wheel Balancer equipped with a 22" inches Touchscreen Monitor (for high volumes of wheel services shop). The new design and the new GUI (Graphic user interface) allow high performances and accuracy with all type of cars, motorcycle and light trucks wheels.

## DIGITAL VERSION

## TOUCH VERSION



	PNEUMATIC LOCKING	MANUAL LOCKING	LASER POINTERS	BLUE	GREY	GREY VAS	GREY BMW	230 V/1/50-60	110V/1/60
TOUCH VERSION		•		•	•			•	
	•		•	•	•	•	•	•	•
DIGITAL VERSION		•		•	•			•	
	•		•	•	•	•	•	•	•

## Beissbarth Service worldwide



**Factory customer service:**  
Beissbarth and certified partner companies provide on-site assistance with installation, training and maintenance in more than 90 countries around the world.

**Training Centre:**  
Through your local dealer

**Service from Beissbarth Munich:**  
(applicable for the German market)

- Immediate telephone support
- Rapid replacement parts deliveries
- Individual maintenance contracts

**Software Centre:**  
Technical documentation, specified vehicle data and marketing material for immediate download:  
[www.beissbarth.com](http://www.beissbarth.com)



Local distributor:

Beissbarth GmbH  
Hanauer Strasse 101  
80993 München (Munich, Bavaria)  
Germany  
Tel. +49-89-149 01-0  
Fax +49-89-149 01-240  
[www.beissbarth.com](http://www.beissbarth.com)  
[sales@beissbarth.com](mailto:sales@beissbarth.com)

## NEW WHEEL BALANCERS RANGE

# MT ZERO 6



# MT ZERO 6



### NEW GRAPHIC USER INTERFACE

- New Digital display with high quality LCD technology, enhancing sharpness and brightness for a unique digital experience
- 22" Touch screen monitor with HQ graphic
- Just One touch selection
- Re-engineered and intuitive GUI



### CONNECTIVITY

- Ready to be connected to the workshop



### OPTIMIZATION PROGRAM



### 2 USERS



### SONAR

- Automatic width measurement
- Self Spoke readiness



### 1 LASER POINTER

- External
- Fixed positioning for steal rims



### AUTOMATIC TIRE POSITIONING

- Time saving for weight application
- Driven-auto positioning in the unbalancing position for internal and external weight application



### OPTIMIZED STATIC AND DYNAMIC FUNCTION (OSD)

The new wheel balancer suggests the correct tire's position to guarantee the best matching between the rim and the wheel

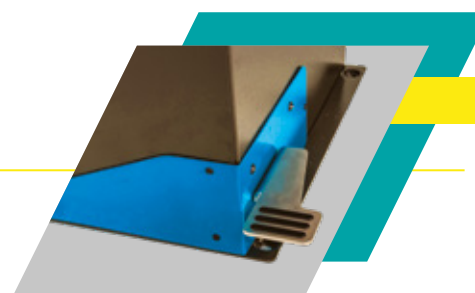


### 240MM MEASUREMENT SHAFT



### MULTI-FUNCTIONAL PEDAL

- Multifunctional: Electromechanical brake, Clamping, Unclamping
- Ergonomic design



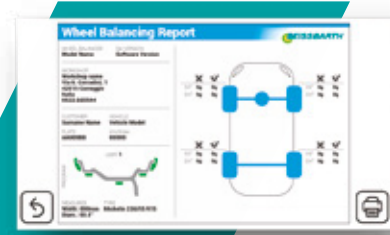
### SELF DIAGNOSTIC

- Automatic check-up for easy troubleshooting
- Ready for remote access



### PRINT OUT

- Detailed balancing procedure report



### NEW DESIGN

- More space available for tools and weights
- Everything at hand in an ergonomic design
- New, solid and no-slip weight tray



### QUICK SELECTION PROGRAM (QSP)

Fast and Automatic recognition of TOP3 Programs: Standard, Alu 2, Alu 3



### 2 INTERNAL LASER POINTERS

- One fixed laser 12 o' clock positioning for steel rims
- One auto-positioning laser for internal weight applications



### ALUDATA ARM



### LED LIGHT RING



## ACCESSORY



PN: 1 695 654 994  
Laser pointer with lighting system



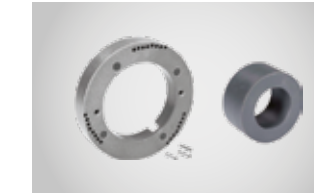
PN: 1695 900 004  
Tyre elevator



PN: 1695 606 200  
Cone spacer



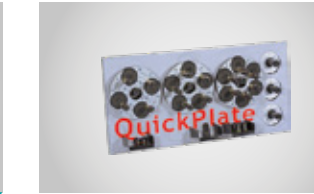
PN: 1695 654 849  
Set of light truck cones 88 - 174 mm



PN: 1695 901 667  
Kit of Off-road cones from the back incl. pins (40mm) distance ring, polyamide spacer



PN: 1695 554 043  
3-4-5-hole Flange



PN: 1695 655 294  
Set of QuickPlates (4-,5-,6- holes-plates)



PN: 1695 042 875  
Printer only for Monitor model



PN: 1695 656 698  
DuoExpert system (3 collets in a case, 54 - 78 mm)



PN: 1695 656 570  
Kit demo box for passenger car



PN: 1695 654 039  
Basic motorbike wheel centering kit (14 mm)



PN: 1695 654 060  
Monolever wheel centering kit+shaft (19mm)

## TECHNICAL DATA

MT ZERO 6	
Power supply	230 V 1ph 50/60 Hz
Balancing speed (50 - 60 Hz)	220 rpm ± 2%
Max. wheel weight	80 Kg
Max. wheel diameter	1150 mm
Max. wheel width	508 mm
Rim diameter	13"-30"/12"- 40"
Rim width	3"-15"/3"-20"
Accuracy	5% ± 1g/1g
Measuring time	5s
Max. dimensions (W x D x H)	1730 x 1380 x 1915 mm

### SCOPE OF DELIVERY:

- Wheel protection
- Centering flange respecting the model
- Cones:
  - 3 cones for mechanical locking system
  - 4 cones for pneumatic locking system
- Weight plier
- Compass
- Calibration weight
- Operation manual with CE certification
- Weight scraper
- Rim protection - quick nut
- Light ring with laser pointers

### SOFTWARE LANGUAGES - MONITOR MODEL:

Italian, French, English, German, Spanish, Portuguese, Czech, Polish, Hungarian, Slovenian, Dutch, Serbian, Finnish, Turkish, Croatian, Swedish, Lithuanian, Russian, Israeli, Bulgarian, Slovak, Danish, Persian, Japanese, Icelandic, Chinese and Korean

**MT. ZERO 6**