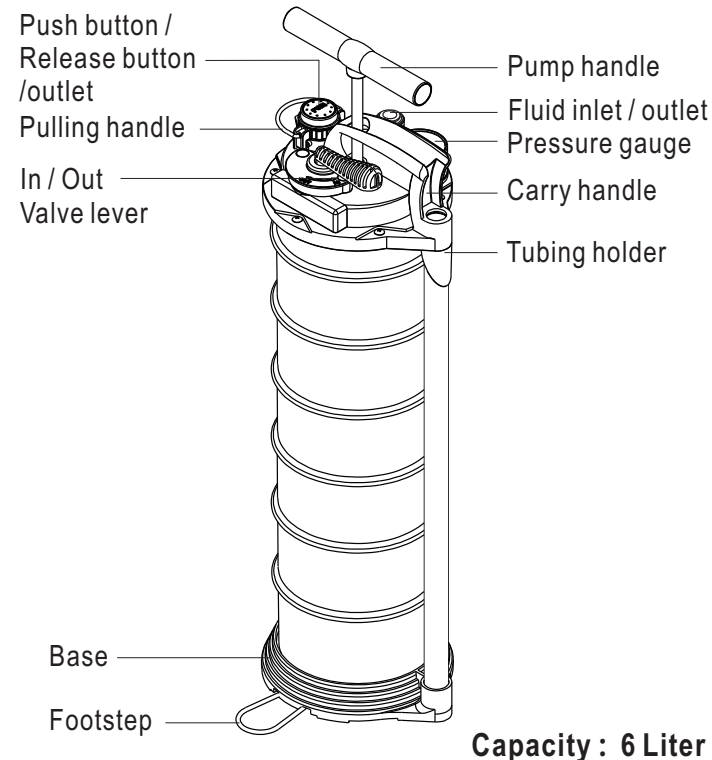


Easy pump-in / out

HD-TF1101

Manual Extract & Discharge Pump with ATF filler system

1. SPARE PARTS



2. Option Parts of Filler System

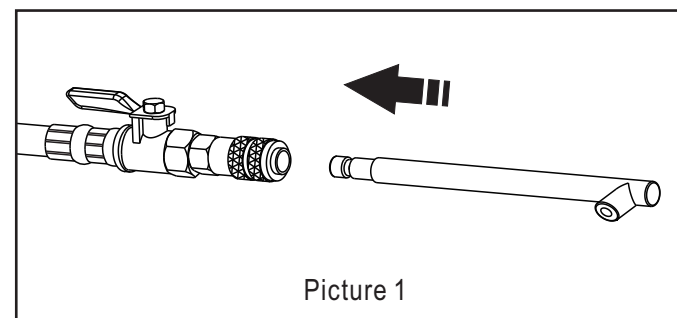
	Bag holder	Main tube for ATF	Ø9.8mm tube for ATF
MODEL	PICTURE	APPLICATIONS	
ATF-01		FORD	
ATF-02		BMW, HONDA, NISSAN & GENERAL USE. IDEAL FOR HONDA SUV DIFFERENTIAL FILL	
ATF-03		VW SHORT ADAPTER	
ATF-04		VW LONG ADAPTER - ALSO FITS PORSCHE	
ATF-05		VW M10 1.0 ALSO FITS MINI COPER	
DSG		VW / AUDI DSG TRANS.	
CVT		AUDI CVT TRANS.	
722.9		MERCEDES 722.9 TRANS.	

3. Operating Instructions

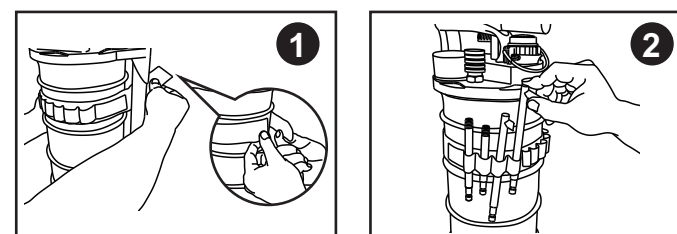
1. Switch the lever to "IN" position. Connect the Main tube with Ø9.8mm tube and suck in the new transmission fluid.
2. Switch the lever to "OUT" position. Then choose one of the ATF components and connect it to the quick connector.
3. Pump the handle up and down to start filling the fluid into the container of car.

Connectors Replacement:

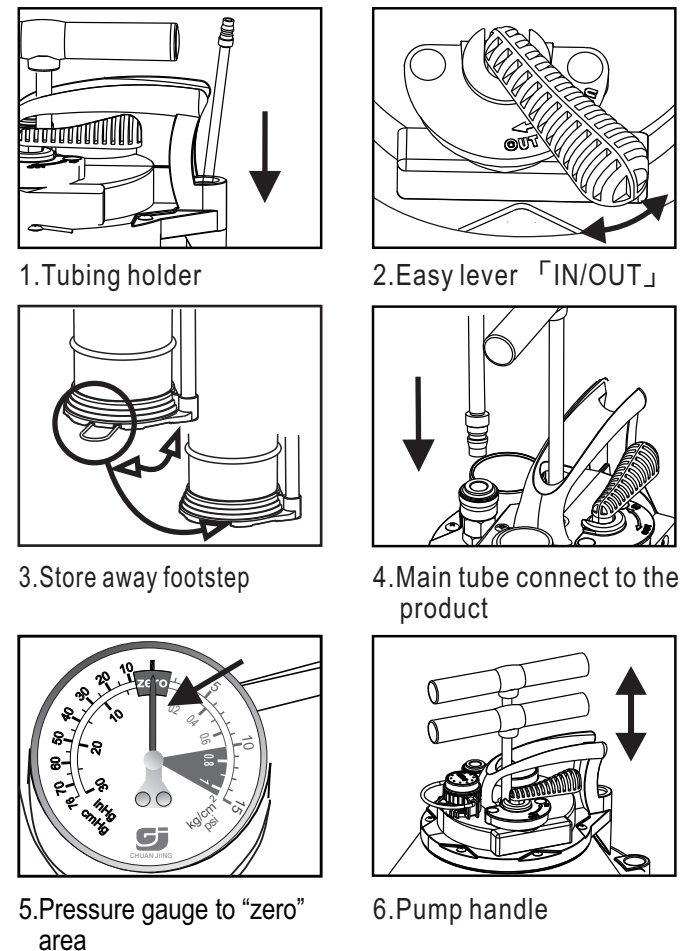
Use the quick connector to replace different components.
<as Picture 1>



Operation steps for ATF Accessory

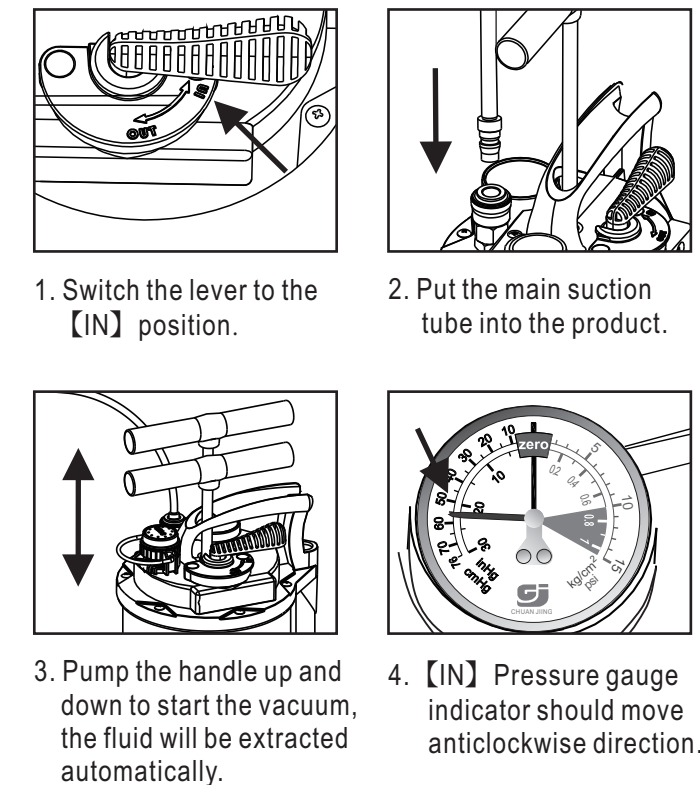


4. SPECIAL FEATURES



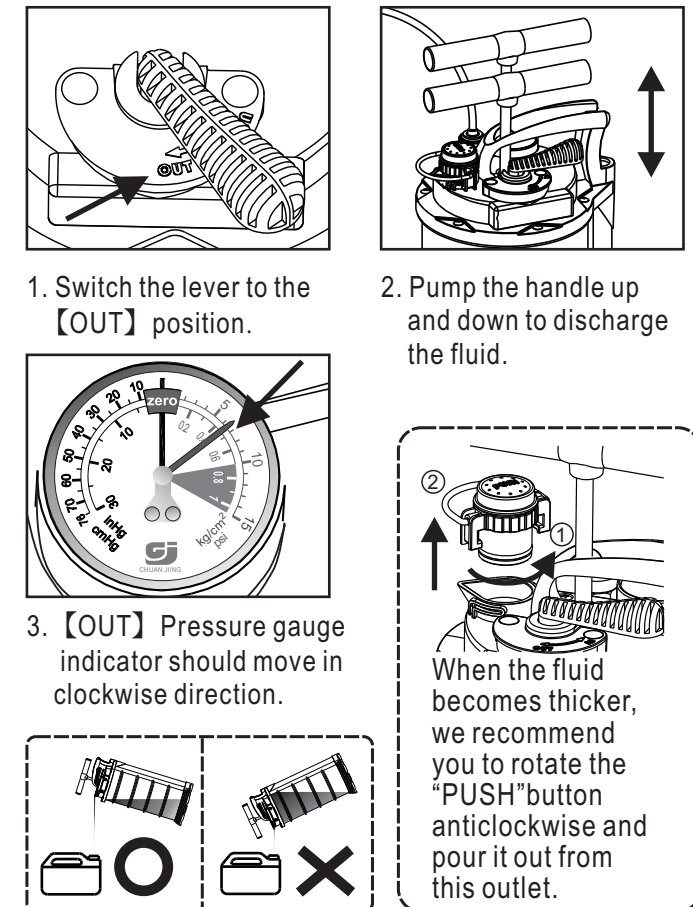
5. OPERATION

Suck In



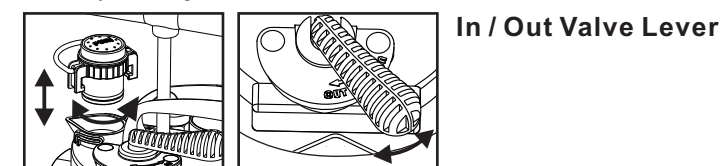
OUT

※ Be sure to reset the pressure gauge to "ZERO" by pressing the "PUSH" button.



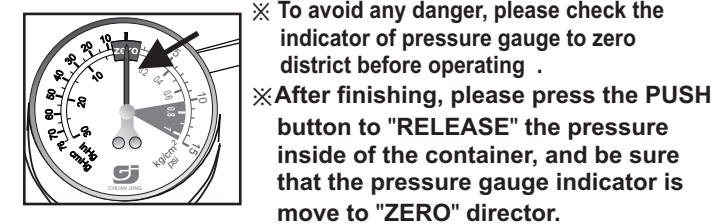
6. CAUTION

1. When using the "PUSH" button to pour the fluid in or out, please rotate the "PUSH" button anticlockwise to open the inlet/outlet. After using, it needs to put the "PUSH" button back by rotating the button clockwise until it locks.



Lockable cap with release function

2. To use the function, switch the IN/OUT valve lever to the correct position.



3. Please do not store the corrosive liquid in the container.
 4. **Do not dismantle**, tamper with or adapt the unit for any purpose other than what it was originally intended for.
- ※ To store the pressure inside the unit is also strictly prohibited.
※ Do not connect the product to the air compressor.

Suck In

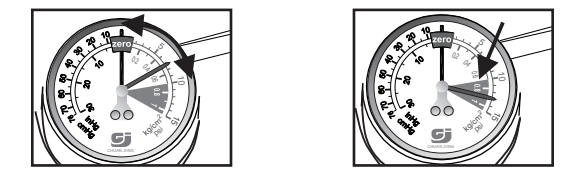
※ While operating the suck function, it may get the situation as following ;

1. Pump handle cannot operate normally.
2. The liquid will stop automatically when it is full, and the pump handle cannot be operated again.

※ **Solution:** Please switch the lever to [OUT] position first and then switch it to [IN] position for using again.

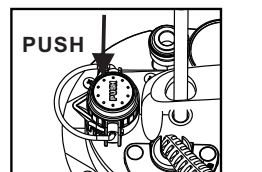
OUT

1. While putting the main suction tube into the quick connector, be careful that the fluid may be discharged in a flash and can be dangerous.
2. Switch the lever to the [OUT] position, pump the handle, and then the indicator of pressure gauge will be in the normal area: 0~10psi (0~0.7kg/cm²) .



Indicator normal area. Indicator dangerous area.

3. When the pressure gauge indicator is in the red area (10-15psi / 0.71kg/cm²), the safety design will release the pressure to the normal area automatically.
4. If the pressure is too high during operating, it needs to press the "PUSH" button to release the press inside of the unit.



Press the "PUSH" button.