



PRODUCT CATALOGUE
OF ELECTROHYDRAULIC LIFTS AND ACCESSORIES



3,0 ECO LINE

TWO POST HYDRAULIC LIFT

Basic information



Personal cars

3000

Loading capacity [kg]

3650

Maximum clearance height [mm]

2220

Clearance width [mm]

1874 ÷ 1901

Maximum height of arm [mm]

95

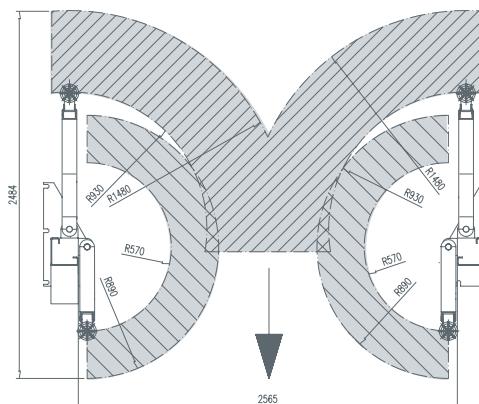
Minimum height of arm [mm]

2,2

Motor [kW]



- LOADING CAPACITY 3000 kg
- ASYMMETRIC DESIGN
- HYDRAULIC DRIVE HIGHLY EFFICIENT AND ECONOMICAL
- HEIGHT LIMIT CONTROL SWITCH TO PROTECT THE CAR
- ERGONOMIC POWER PACK COVER
- EASY OPERATION
- CZECH MADE
- LIFTS ARE DESIGNED AND MANUFACTURED IN ACCORDANCE WITH ČSN EN 1493:2010



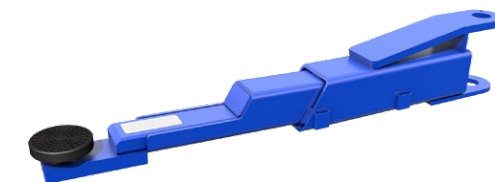
Advantages



ELECTRO-MAGNETIC BUTTON OPERATION CONTROL



ELECTRO BOX EB2



LOW PROFILE ARM

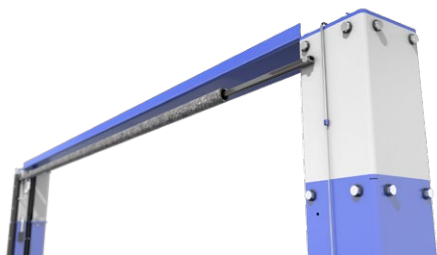


3,6 CLASSIC* / 4,0 VARIANT

TWO POST HYDRAULIC LIFT

Advantages

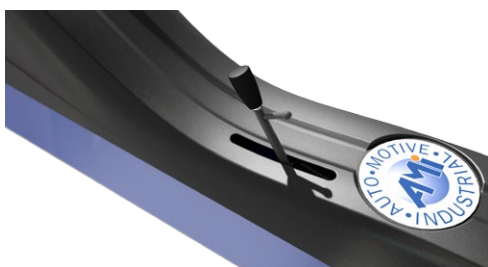
Basic information



VARIETY OF HEIGHTS 3670* mm, 4000 mm, 4200 mm, 4400 mm AND 4650 mm

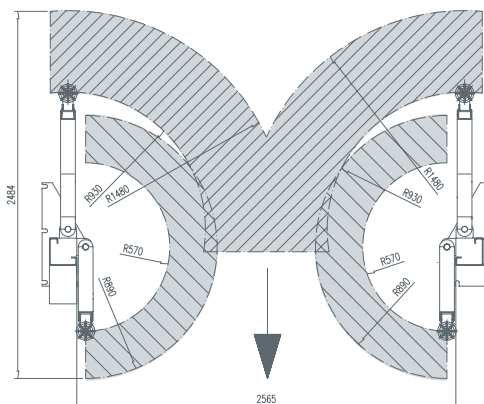


ELECTRO BOX EB3



PROPORCIONAL LIFT REGULATION

- LOADING CAPACITY 3600*/4000 kg
- ASYMMETRIC DESIGN
- HYDRAULIC DRIVE HIGHLY EFFICIENT AND ECONOMICAL
- ERGONOMIC POWER PACK COVER
- HEIGHT LIMIT CONTROL SWITCH TO PROTECT THE CAR
- VARIABILITY IN POSTS EXTENSIONS 3670*mm, 4000 mm, 4200 mm, 4400 mm AND 4650 mm
- SET OF TRUCK ADAPTORS 50 mm AND 100 mm
- EASY OPERATION
- CZECH MADE
- LIFTS ARE DESIGNED AND MANUFACTURED IN ACCORDANCE WITH ČSN EN 1493:2010



Personal cars and commercial vehicles



Loading capacity [kg]

3600*
4000

Maximum clearance height [mm]

3550/3880/4080/
4280/4530

Clearance width [mm]

2220

Maximum height of arm [mm]

1851

Minimum height of arm [mm]

95

Motor [kW]

2,2

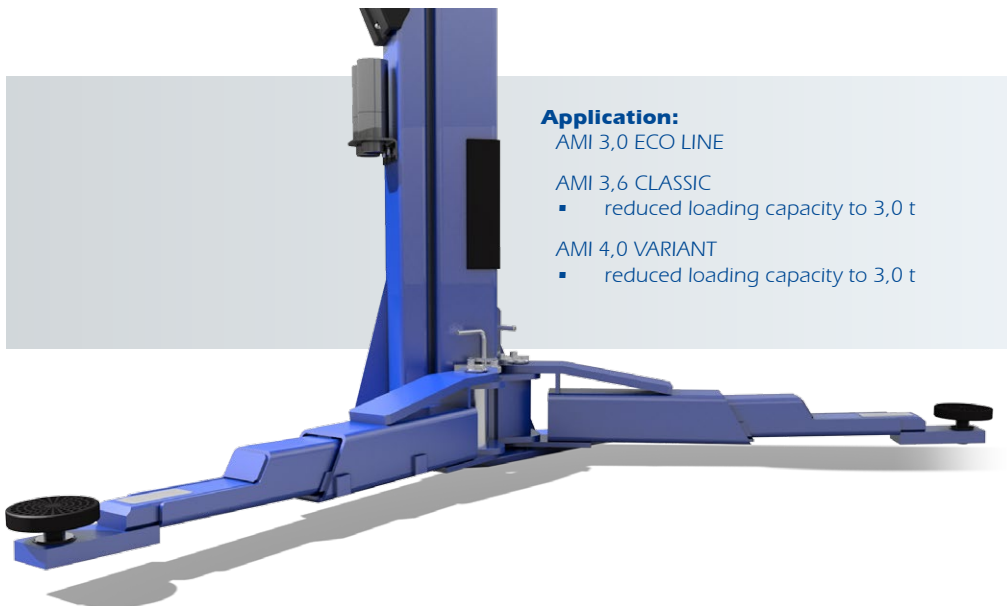




MODEL CONFIGURATIONS

AMI 3,0 ECO LINE / AMI 3,6 CLASSIC / AMI 4,0 VARIANT

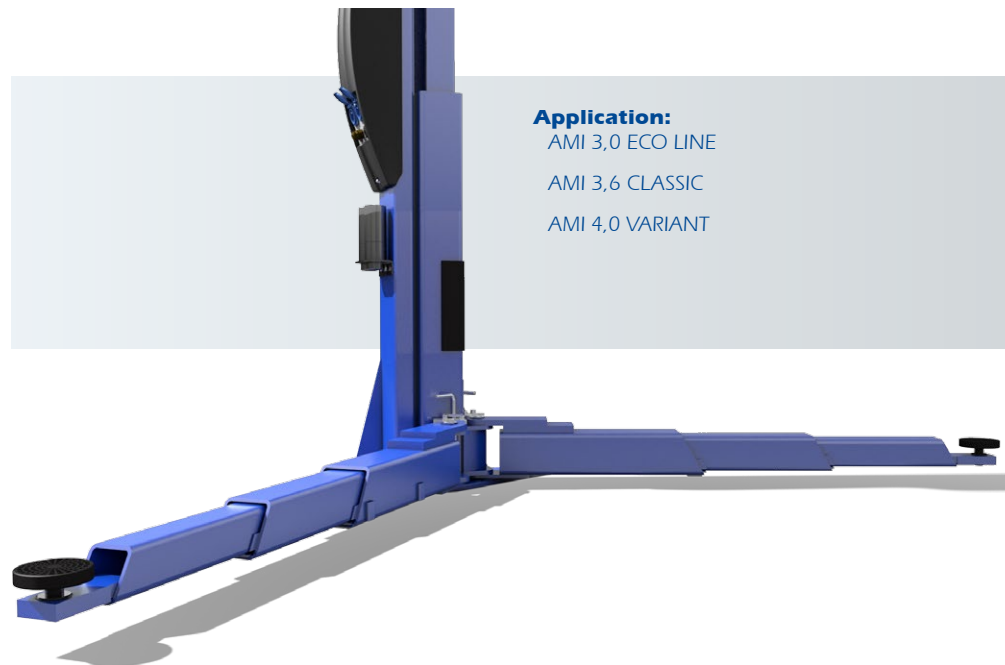
Low profile arms



Application:

- AMI 3,0 ECO LINE
- AMI 3,6 CLASSIC
 - reduced loading capacity to 3,0 t
- AMI 4,0 VARIANT
 - reduced loading capacity to 3,0 t

3-stage arms



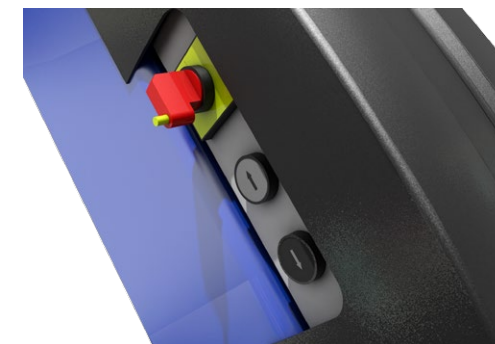
Application:

- AMI 3,0 ECO LINE
- AMI 3,6 CLASSIC
- AMI 4,0 VARIANT

EB1-4 with integrated socket
3Ph/400/16



With electro-magnetic button
operation control

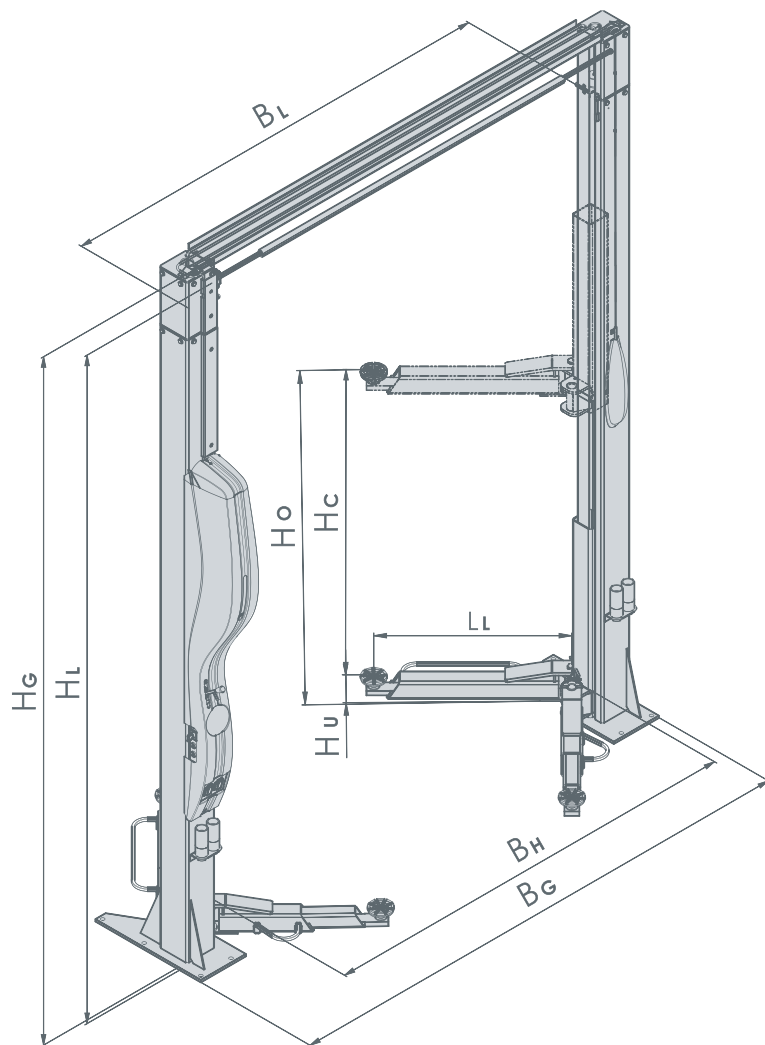




TECHNICAL DATA

AMI 3,0 ECO LINE / AMI 3,6 CLASSIC / AMI 4,0 VARIANT

Technical drawing for asymmetric two post hydraulic lifts



Technical data for asymmetric hydraulic lifts

	AMI 3,0 ECO LINE	AMI 3,6 CLASSIC* AMI 4,0 VARIANT
Maximum loading capacity	3000 kg	3600 kg* / 4000 kg
Maximum lifting time	32 s	48 s
Minimum lowering time	21 s	24 s
Power system	TN-S 3/N/PE 400/230V AC, 50 Hz	
Motor	2,2 kW	2,2 kW
Maximum height of arm H_o	1868 ÷ 1895 mm	1845 mm
Minimum height of arm H_u	95/79 mm**	95 mm
Maximum clearance height H_L	3650 mm	3550*/3880/4080/4280/4530 mm
Total height H_G	3740 mm	3670*/4000/4200/4400/4650 mm
Maximum clear distance of posts B_L	2565 mm	2565 mm
Maximum clearance width B_H	2220 mm	2220 mm
Total width B_G	3035 mm	3035 mm
Extension of short arm L_k	570 mm - 890 mm	570 mm - 890 mm
Extension of long arm L_L	930 mm - 1480 mm	930 mm - 1480 mm
Thickness of slab	160 mm	200 mm

- *no extension possibility
- **standard/lower profile of arm
- right to make technical changes reserved



5,5 VAN

TWO POST HYDRAULIC LIFT

Basic information



Lightweight trucks and vans

5500

Loading capacity [kg]

**3863/4163/4463/
4763/5263**

Maximum clearance height [mm]

2765

Clearance width [mm]

1985

Maximum height of arm [mm]

129

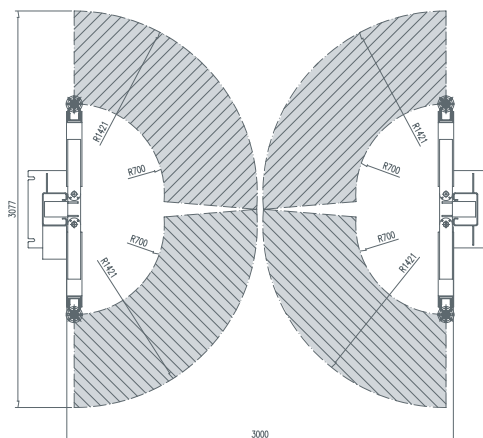
Minimum height of arm [mm]

3,0

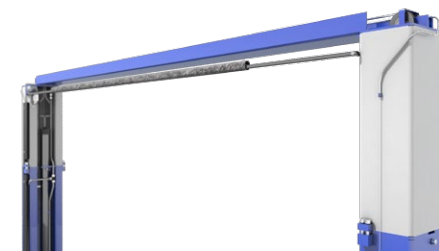
Motor [kW]



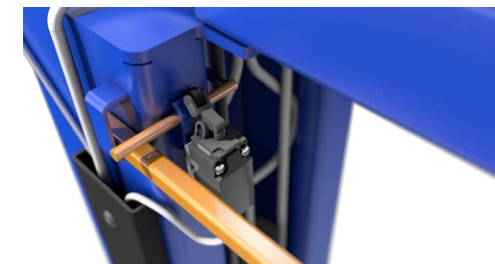
- LOADING CAPACITY 5500 kg
- SYMMETRIC DESIGN
- HYDRAULIC DRIVE HIGHLY EFFICIENT AND ECONOMICAL
- ERGONOMIC POWER PACK COVER
- HEIGHT LIMIT CONTROL SWITCH TO PROTECT THE CAR
- VARIABILITY IN POSTS EXTENSIONS 4000 mm, 4300 mm, 4600 mm, 4900 mm (LIMITING VALUE 5400 mm)
- SET OF TRUCK ADAPTORS 50 mm AND 100 mm
- EASY OPERATION
- CZECH MADE
- LIFTS ARE DESIGNED AND MANUFACTURED IN ACCORDANCE WITH ČSN EN 1493:2010



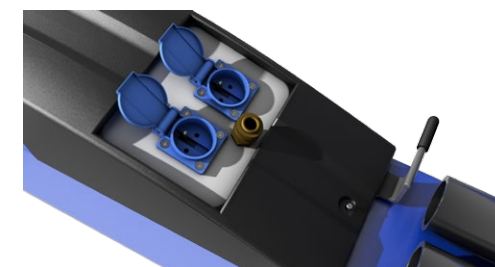
Advantages



VARIETY OF HEIGHTS 4000 mm, 4300 mm, 4600 mm, 4900 mm (LIMITING VALUE 5400 mm)



DOUBLE-ACTING SWITCHING SYSTEM



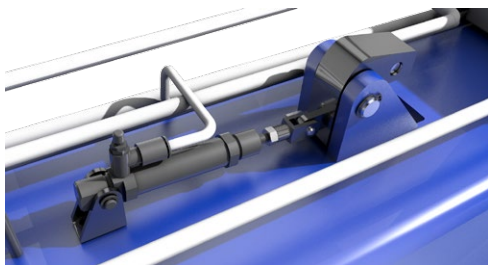
ELECTRO BOX EB2



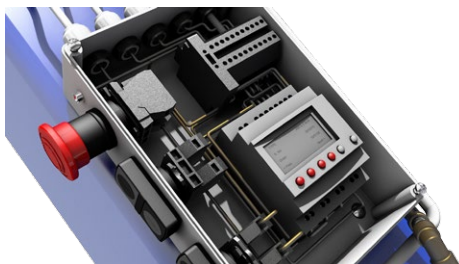
8,0 BUS

TWO POST HYDRAULIC LIFT

Advantages



PNEUMATIC OPERATING SYSTEM FOR SAFETY LOCK



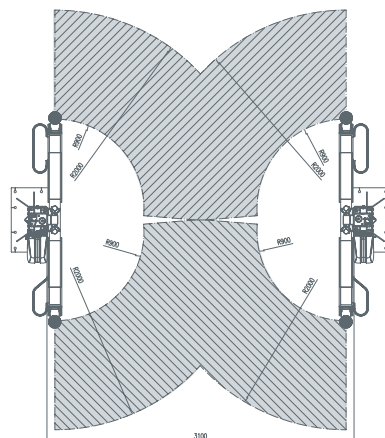
ELECTRONIC OPERATION OF LIFTING AND LOWERING



DOUBLE-SIDE BUTTON OPERATION CONTROL

Basic information

- LOADING CAPACITY 8000 kg
- SYMMETRIC DESIGN
- HYDRAULIC DRIVE HIGHLY EFFICIENT AND ECONOMICAL
- ERGONOMIC POWER PACK COVER
- HEIGHT LIMIT CONTROL SWITCH TO PROTECT THE CAR
- VARIABILITY IN POSTS EXTENSIONS 4350 mm, 4700 mm AND 5000 mm
- SET OF TRUCK ADAPTORS 60 mm AND 120 mm
- EASY OPERATION
- THE FUNCTION SHORT DROP BUTTON ON THE RIGHT COLUMN ALLOWS THE PRECISE LOWERING TO THE SPECIFIED LOCATION
- CZECH MADE
- LIFTS ARE DESIGNED AND MANUFACTURED IN ACCORDANCE WITH ČSN EN 1493:2010



Commercial vehicles and trucks



Loading capacity [kg]

8000

Maximum clearance height [mm]

4220/4570/4870

Clearance width [mm]

2800

Maximum height of arm [mm]

2175

Minimum height of arm [mm]

144

Motor [kW]

3,0

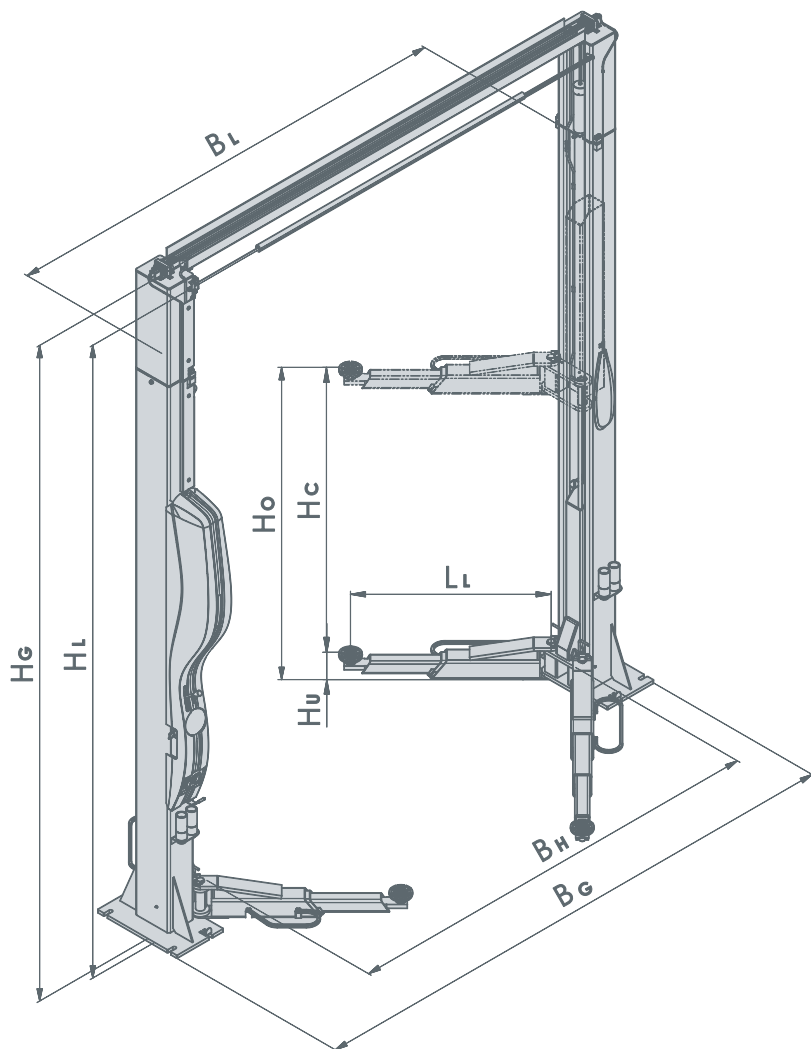




TECHNICAL DATA

AMI 5,5 VAN / AMI 8,0 BUS

Technical drawing for symmetric two post hydraulic lifts



Technical data for symmetric hydraulic lifts

	AMI 5,5 VAN	AMI 8,0 BUS
Maximum loading capacity	5500 kg	8000 kg
Maximum lifting time	48 s	100 s
Minimum lowering time	26 s	42 s
Power system	TN-S 3/N/PE 400/230V AC, 50 Hz	
Motor	3,0 kW	3,0 kW
Maximum height of arm H_o	1979 mm	2169 mm
Minimum height of arm H_u	129 mm	144 mm
Maximum clearance height H_L	3863/4163/4463/4763 /5263 mm	4220/4570/4870 mm
Total height H_G	4006/4306/4606/4906 /5406 mm	4350/4700/5000 mm
Maximum clear distance of posts B_L	3000 mm	3100 ÷ 4100 mm
Maximum clearance width B_H	2765 mm	2800 mm
Total width B_G	3600 mm	3976 mm
Extension of arm L_L	700 mm ÷ 1421 mm	900 mm ÷ 2000 mm
Thickness of slab	300 mm	230 mm

▪ right to make technical changes reserved



TECHNICAL DATA

TWO POST HYDRAULIC LIFT

Lift assembling

- AMI lifts are typically delivered pre-assembled and packed in heavy transport resistant frame.
- To put on the hand the lift correctly is particularly difficult task. Therefore is strongly recommended that the lift is assembled, fixed on the floor and adjusted by specialists certified by producer.
- The building roof must be higher about 100mm than the total lifting height.
- AMI lifts can be fixed only on top quality concrete floor representing the high quality concrete (the minimum concrete quality mark C20/25 according to DIN 1045:2001-07) slab at:

160 mm AMI 3,0 ECO LINE

200 mm AMI 3,6 CLASSIC / AMI 4,0 VARIANT

300 mm AMI 5,5 VAN

230 mm AMI 8,0 BUS

alternatively, on the foundation of the same concrete having the dimensions 1200 by 700 mm (1200 x 1200 mm for AMI 8,0 BUS) under each post and sunk to a minimum depth of 500 mm indoors (800 mm for AMI 8,0 BUS) and 800 mm outdoors (1000 mm for AMI 8,0 BUS).

- There must be an electricity line available at the site complying with the following specifications: TN-S 3/N/PE AC 400V/230V/50 Hz. This power line must be provided with the 16/3/B (20/3/B for AMI 5,5 VAN and AMI 8,0 BUS) amperes contact breaker fuse complying with the characteristics of the electric motor of the lift. Power mains must be executed by a flexible cable type H05VV-F.
- The oil tank of the lift must be filled with the oil OHHM 32 (the level of filling can be checked through the transparent plastic tank).

Packing dimensions

TYPE	LENGTH	WIDTH	HEIGHT	GROSS WEIGHT
AMI 3,0 ECO LINE	3,8 m	1,12 m	0,45 m	520 kg
AMI 3,6 CLASSIC	3,70 m	1,15 m	0,45 m	570 kg
AMI 4,0 VARIANT 4000/4200/4400/4650 mm	max.4,8 m	1,15 m	0,45 m	620/625/635/640 kg
AMI 5,5 VAN: 4000/4300/4600/4900/5400 mm	5,7 m	1,15 m	0,52 m	896/921/931/951/977 kg
AMI 8,0 BUS 4350/4700/5000 mm	max.5,05 m	1,15 m	1,01 m	1489/1510/1530 kg

- right to make technical changes reserved

Colour of the lifts according end-user request, RAL classification as reference



AMI 3,0 ECO LINE

AMI 3,6 CLASSIC / 4,0 VARIANT

AMI 5,5 VAN

AMI 8,0 BUS

AMI 4,0 N-WAY / IN

AMI 5,5 N-WAY / IN

AMI 5,5 / 7,5 TRUCK

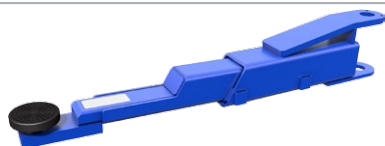
AMI J 2,0 / 2,5 RH / 2,5 VH



ACCESSORIES

TWO POST HYDRAULIC LIFTS

Low profile arm



- short, 570-890 mm, 030216-00-00
- long, 930-1480 mm, 030211-00-0

Application:

AMI 3,0 ECO LINE

3-stage arms

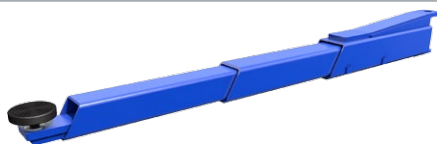


- 726-1447 mm, 092209-00-00

Application:

AMI 3,0 ECO LINE
AMI 3,6 CLASSIC
AMI 4,0 VARIANT

3-stage arms EX



- 900-2000 mm, 398210-00-00

Application:

AMI 5,5 VAN

Adapters for commercial vehicles



- Adapter „PIN“
398294-00-00, A
- Adapter „PIN“
397298-00-00, D



- Adapter „V“
398295-00-00, B
- Adapter „V“
397299-00-00, E



- Adapter „RING“
398296-00-00, C



- Adapter „U I“
398297-00-00, F



- Adapter „U II“
398298-00-00, G

Application:

AMI 3,0 ECO LINE A/B/C/F/G
AMI 3,6 CLASSIC A/B/C/F/G
AMI 4,0 VARIANT A/B/C/F/G
AMI 5,5 VAN A/B/C/F/G
AMI 8,0 BUS D/E/C

Rubber pads



- Rubber pad
Ø 125 mm, GP12,
330000000219



- Rubber pad with
the steel frame GPK,
94218



- Rubber pad
- ring,
Ø 125 mm, GPVA
092294-00-00

- Rubber pad
- ring,
Ø 125 mm, GPVB
399294-00-00



- Rubber pad
- rectangular,
148x80 mm, GPVO
092295-00-00

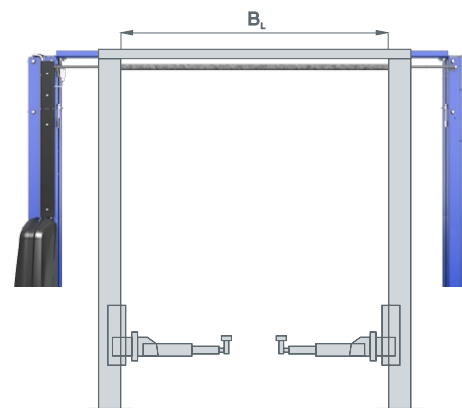
Application:

AMI 3,0 ECO LINE GP12, GPK, GPVA, GPVO
AMI 3,6 CLASSIC GP12, GPK, GPVA, GPVO
AMI 4,0 VARIANT GP12, GPK, GPVA, GPVO

AMI 5,5 VAN
AMI 8,0 BUS

GP12, GPK, GPVA, GPVO
GP12, GPVB

Special lift width



- Special lift width (dimension in scheme B_L)

Application:

AMI 3,0 ECO LINE 0 mm - 3400 mm
AMI 3,6 CLASSIC 0 mm - 3400 mm
AMI 4,0 VARIANT 0 mm - 3400 mm
AMI 5,5 VAN 0 mm - 4600 mm
AMI 8,0 BUS 0 mm - 4100 mm



ACCESSORIES

TWO POST HYDRAULIC LIFTS

Truck adaptor



- Truck adaptor, NP05, 80301
- Truck adaptor, NP10, 80302
- Truck adaptor, NP15, 80303
- Truck adaptor, NP25, 80304
- Truck adaptor, NH06, 397301-00-00
- Truck adaptor, NH12, 397302-00-00
- Truck adaptor, NH18, 397303-00-00
- Truck adaptor, NH24, 397304-00-00

Electro-magnetic button operating system



- Electro-magnetic button operating system

Application:

AMI 3,6 CLASSIC
AMI 4,0 VARIANT
AMI 5,5 VAN

Electro box



- EB1
092094-00-00



- EB1 - 4
092094-02-00



- EB2
092095-00-00

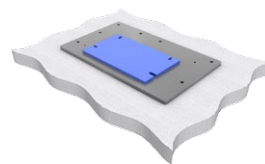


- EB3
092096-00-00

Application:

AMI 3,0 ECO LINE
AMI 3,6 CLASSIC
AMI 4,0 VARIANT
AMI 5,5 VAN
AMI 8,0 BUS

Stabilizing plate

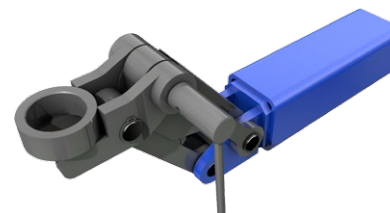


- When the ground is not solid enough

Application:

AMI 4,0 VARIANT (100 mm) 092600-00-00
AMI 5,5 VAN (120 mm) 098600-00-00

Adjustable pads



- Adjustable pads SP 092851-00-00

Application:

AMI 3,0 ECO LINE

Zincing baseplate



- Zincing lower part of lift

Application:

AMI 3,0 ECO LINE
AMI 3,6 CLASSIC
AMI 4,0 VARIANT
AMI 5,5 VAN
AMI 8,0 BUS

Other accessories



- integrated socket
3Ph/400/16
092093-00-00



- air hose reel
092092-00-00



- power reel
092091-00-00

Application:

AMI 3,0 ECO LINE
AMI 3,6 CLASSIC
AMI 4,0 VARIANT
AMI 5,5 VAN
AMI 8,0 BUS

Alternative electrical power supply system

- TN-S 3NPE 220/127V AC, 50Hz
- TN-S 1NPE 230V AC, 50Hz
- IT 3PE 230V AC, 50Hz
- TN-S 3NPE 400/230V AC, 60Hz
- TN-S 3NPE 220/127V AC, 60Hz
- TN-S 3NPE 208/120V AC, 60Hz



4,0 N-WAY / 4,0 N-WAY IN

FOUR POST HYDRAULIC LIFT

Basic information



Personal cars and commercial vehicles

4000

Loading capacity [kg]

2970

Maximum clear distance of posts [mm]

4800

Clear distance of posts [mm]

505

Platform width [mm]

1950

Maximum height of platform [mm]

3,0

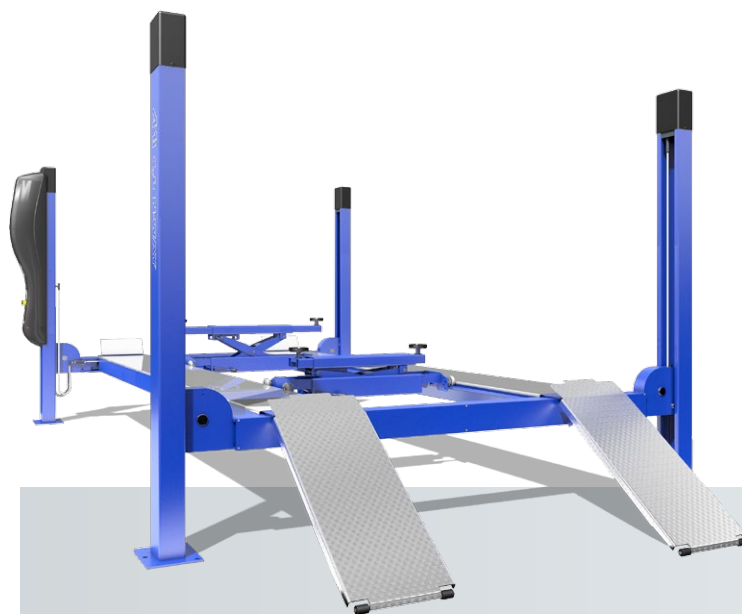
Motor [kW]



AMI 4,0 N-WAY

Configuration:

- AL platform protection
- 3D KIT + slip plates 2x1650 mm



- LOADING CAPACITY 4000 kg
- DESIGNED FOR 3D WHEEL ALIGNMENT
- SYMMETRIC DESIGN
- ADJUSTABLE PLATFORMS (1000 mm ÷ 1700 mm)
- ERGONOMIC POWER PACK COVER

AMI 4,0 N-WAY IN

Configuration:

- 3D KIT + slip plates 2x1650 mm



- EXCELLENT RESISTANCE OF LIFT STRUCTURE-STATIC AS WELL AS DYNAMIC
- HYDRAULIC DRIVE HIGHLY EFFICIENT AND ECONOMICAL
- ELECTRO-MAGNETIC SAFETY LOCK
- ACOUSTIC WARNING FINAL DESCENT PHASE

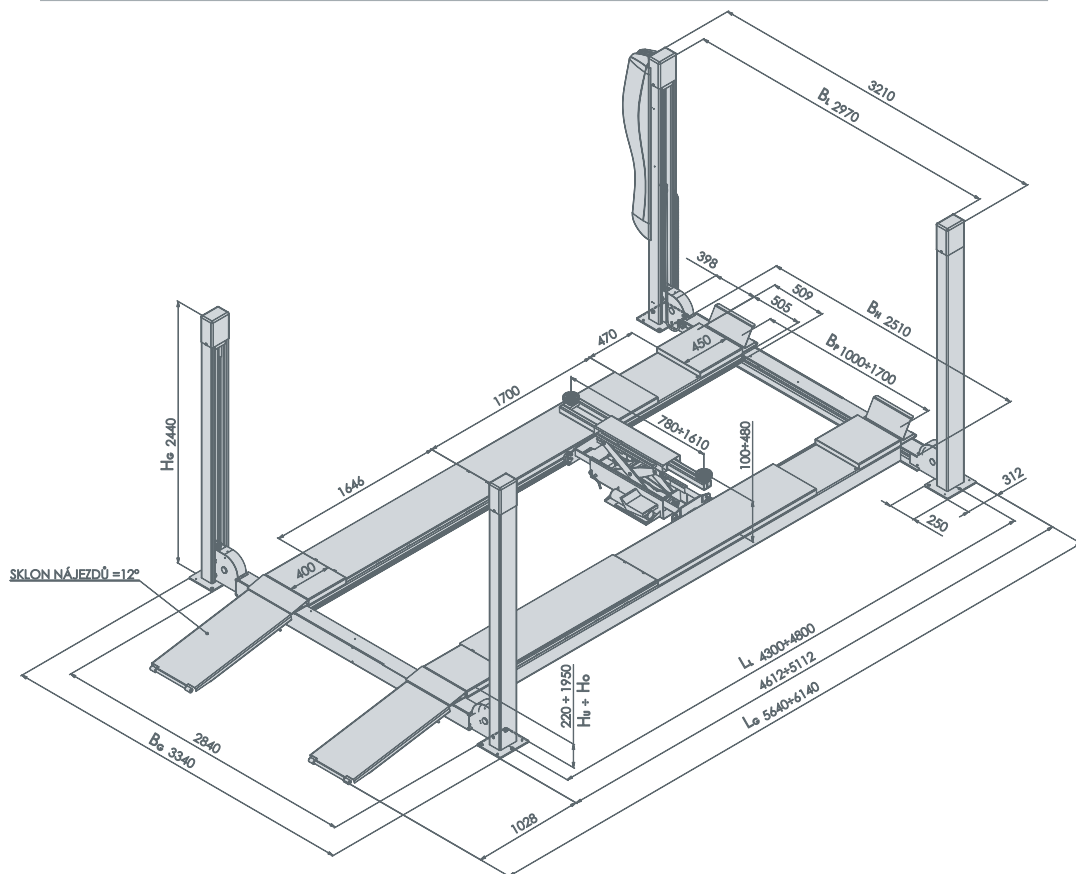
- CZECH MADE
- LIFTS ARE DESIGNED AND MANUFACTURED IN ACCORDANCE WITH ČSN EN 1493:2010



TECHNICAL DATA

FOUR POST HYDRAULIC LIFT

Technical drawing for four post hydraulic lifts



Packing dimensions

TYPE	LENGTH	WIDTH	HEIGHT	GROSS WEIGHT
L=4800 mm	5,05 m	1,15 m	0,7 m	1430/1480 kg

▪ right to make technical changes reserved

Technical data for AMI 4,0 N-WAY / IN

	L=4800 mm
Maximum loading capacity	4000 kg
Maximum lifting time	40 s
Minimum lowering time	30 s
Power system	TN-S 3/N/PE 400/230V AC, 50 Hz
Motor	3,0 kW
Total height H_G	2440 mm
Maximum height of platform H_O	2010 mm
Minimum height of platform H_U	230 mm
Platform gauge B_P	1000 mm ÷ 1700 mm
Platform width	505 mm
Maximum clear distance of posts B_L	2970 mm
Maximum clearance width B_H	2510 mm
Total width B_G	3340 mm
Maximum length L_G	6140 mm
Clear distance of posts L_L	4800 mm

▪ right to make technical changes reserved



5,5 N-WAY / 5,5 N-WAY IN

FOUR POST HYDRAULIC LIFT

Basic information



Personal cars and commercial vehicles

5500

Loading capacity [kg]

2970

Maximum clear distance of posts [mm]

5000
5450

Clear distance of posts [mm]

505

Platform width [mm]

1950

Maximum height of platform [mm]

3,0

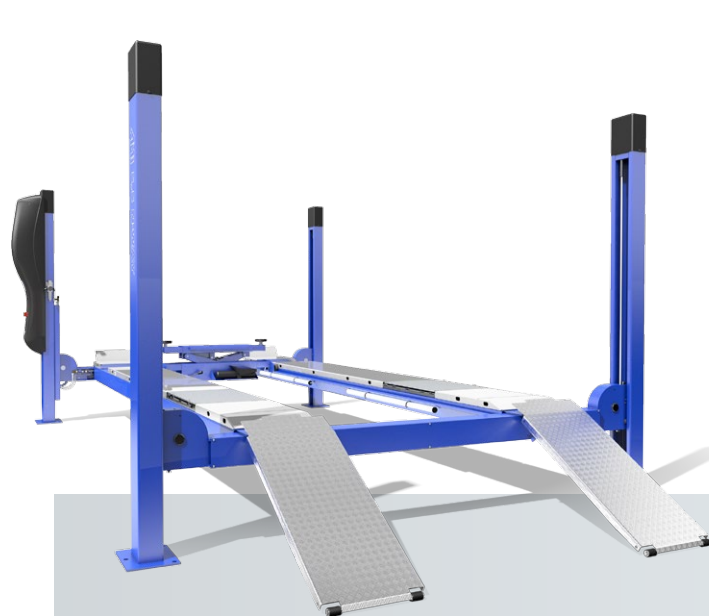
Motor [kW]



AMI 5,5 N-WAY

Configuration:

- AL platform protection
- 3D KIT + slip plates 2x1650 mm
- 3D KIT + slip plates 2x750 mm
- 3D KIT + slip plates 4x750 mm

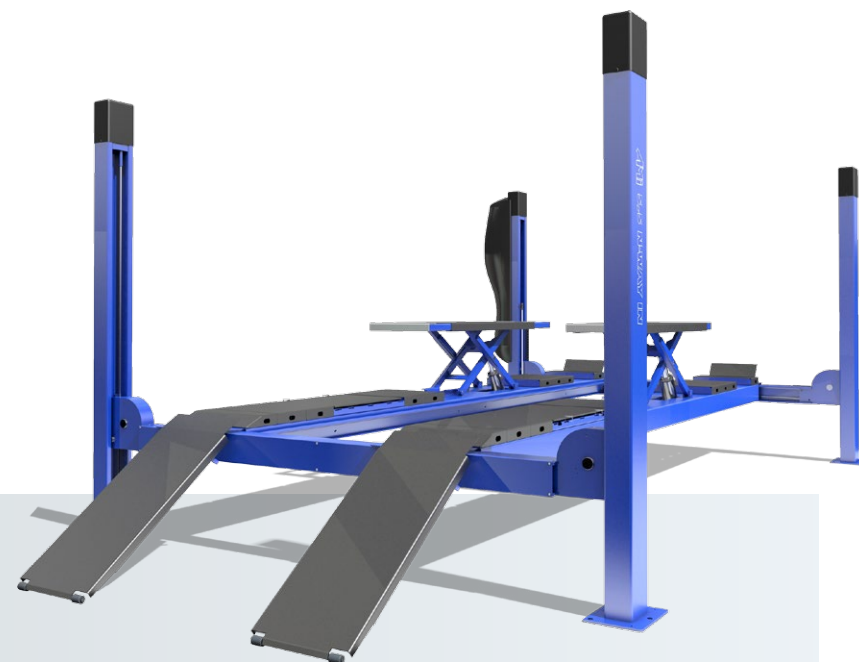


- LOADING CAPACITY 5500 kg
- DESIGNED FOR 3D WHEEL ALIGNMENT
- VARIABILITY IN PLATFORM COVERS INSTALLATION - 3D KIT
- VARIABILITY IN SLIP PLATES INSTALLATION
- SYMMETRIC DESIGN

AMI 5,5 N-WAY IN

Configuration:

- 3D KIT + slip plates 2x1650 mm
- 3D KIT + slip plates 2x750 mm
- 3D KIT + slip plates 4x750 mm



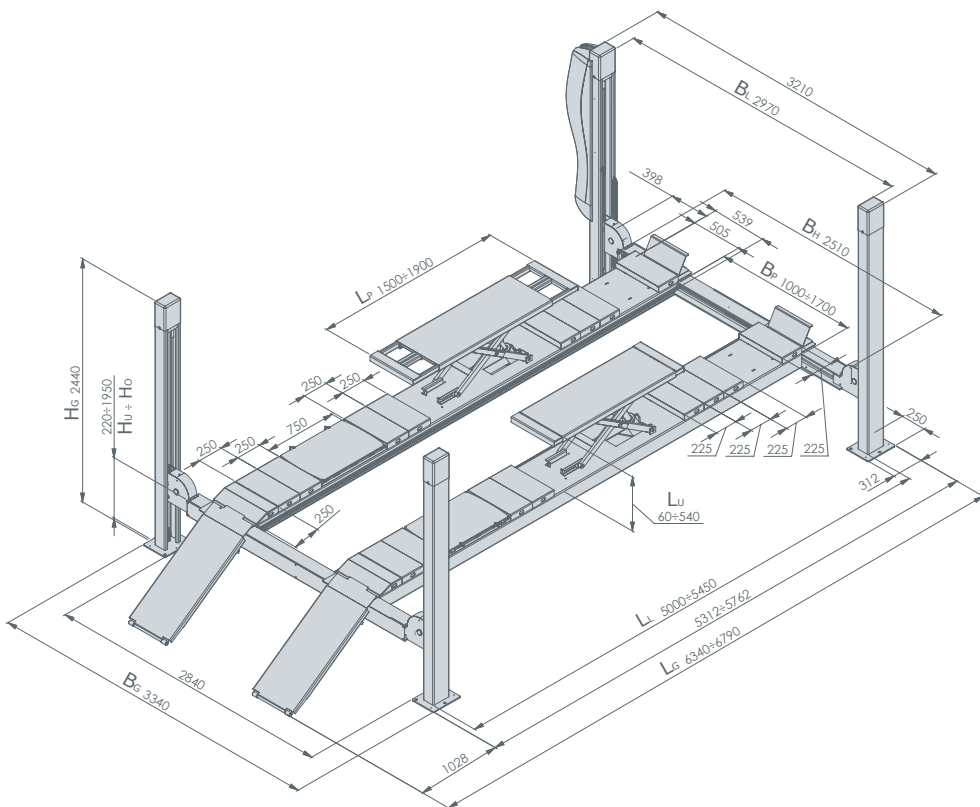
- ADJUSTABLE PLATFORMS (1000 mm ÷ 1700 mm)
- ERGONOMIC POWER PACK COVER
- EXCELLENT RESISTANCE OF LIFT STRUCTURE-STATIC AS WELL AS DYNAMIC
- HYDRAULIC DRIVE HIGHLY EFFICIENT AND ECONOMICAL
- ELECTRO-MAGNETIC SAFETY LOCK
- ACOUSTIC WARNING FINAL DESCENT PHASE
- CZECH MADE
- LIFTS ARE DESIGNED AND MANUFACTURED IN ACCORDANCE WITH ČSN EN 1493:2010



TECHNICAL DATA

FOUR POST HYDRAULIC LIFT

Technical drawing for four post hydraulic lifts



Packing dimensions

TYPE	LENGTH	WIDTH	HEIGHT	GROSS WEIGHT
L=5000 mm	5,25 m	1,15 m	0,7 m	1450/1500 kg
L=5450 mm	5,7 m	1,15 m	0,7 m	1490/1540 kg

▪ right to make technical changes reserved

Technical data for AMI 5,5 N-WAY / IN

	L=5000 mm	L=5450 mm
Maximum loading capacity	5500 kg	
Maximum lifting time	40 s	
Minimum lowering time	30 s	
Power system	TN-S 3/N/PE 400/230V AC, 50 Hz	
Motor	3,0 kW	
Total height H_G	2440 mm	
Maximum height of platform H_O	2010 mm	
Minimum height of platform H_U	230 mm	
Platform gauge B_P	1000 mm ÷ 1700 mm	
Platform width	505 mm	
Maximum clear distance of posts B_L	2970 mm	
Maximum clearance width B_H	2510 mm	
Total width B_G	3340 mm	
Maximum length L_G	6340 mm	6790 mm
Clear distance of posts L_L	5000 mm	5450 mm

▪ right to make technical changes reserved



ACCESSORIES

FOUR POST HYDRAULIC LIFT

Hydraulic jacking beam AMI J 2,0 RH a 2,5 RH



- Hydraulic jacking beam with manual pump, loading 2000 kg and 2500 kg.

Hydraulic jacking beam AMI J 2,0 VH a 2,5 VH



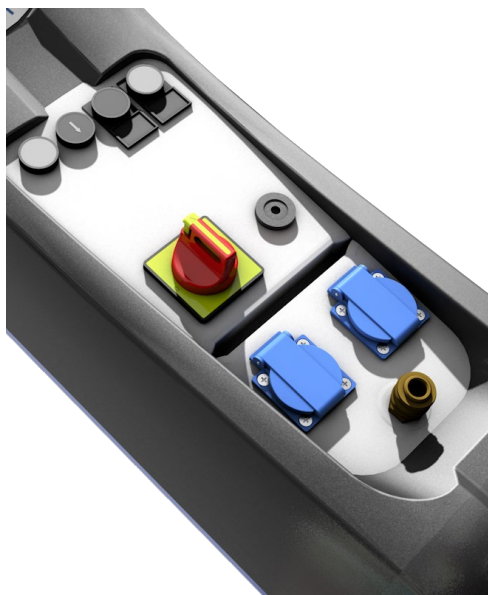
- Hydraulic jacking beam with pneumatic pump, loading 2000 kg and 2500 kg. (necessary air distribution)

Lowering entering



- Lowering entering on platform from 11° to 6°.

Electro box



- Electro box 2x230 V, 395094-00-E4
- Air connection, 395093-01-00

Air distribution



- Air-line connection between lift platforms, 395093-02-00

Lighting



- Working space lighting of lift platforms, 395092-00-E2

Clearance option



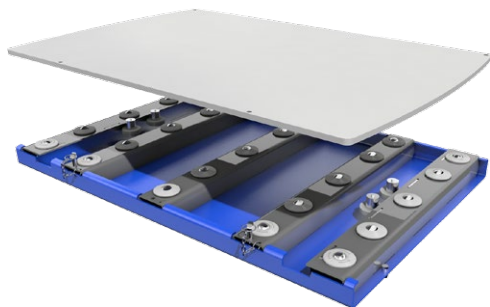
- 2nd entering on platform
- Inclination of ramp 11°.



ACCESSORIES

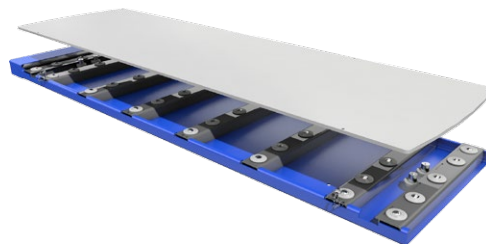
FOUR POST HYDRAULIC LIFT

Slip plates 750



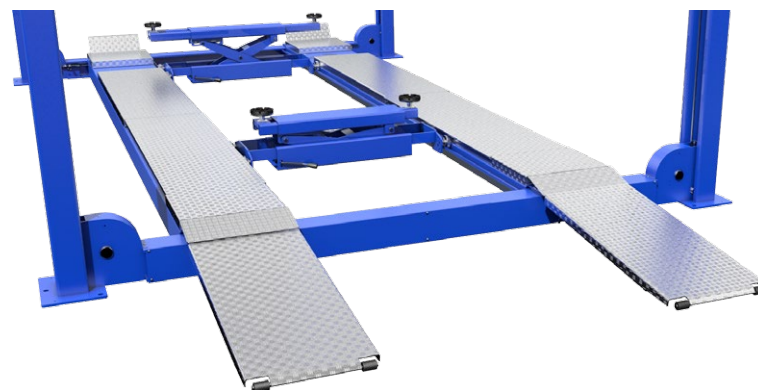
- Slip plates for 3D wheel alignment (L=750 mm)
- AMI 5,5 N-WAY, AMI 5,5 N-WAY IN

Slip plates 1650



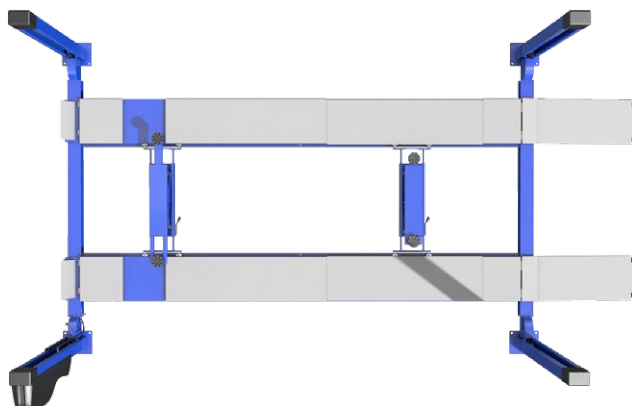
- Slip plates for 3D wheel alignment (L=1650 mm)
- AMI 4,0 N-WAY, AMI 4,0 N-WAY IN
- AMI 5,5 N-WAY, AMI 5,5 N-WAY IN

Platform protection



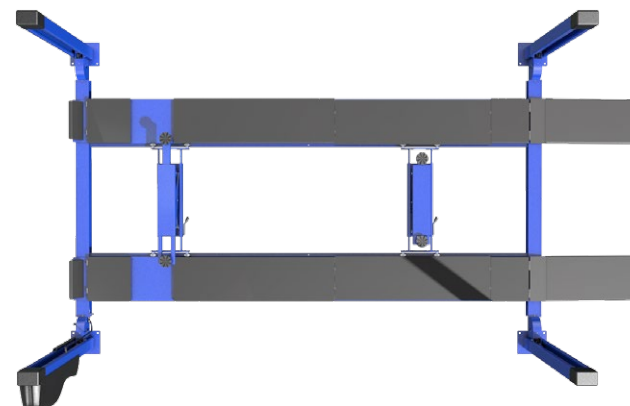
- AL platform protection.

3D KIT



- Set for measuring wheel alignment with 3D technology.
- Platform length variant L=4800 mm for AMI 4,0 N-WAY, AMI 4,0 N-WAY IN.

3D KIT with comaxit surface treatment



- Platform length variants L=5000 mm and L=5450mm for AMI 5,5 N-WAY, AMI 5,5 N-WAY IN.

- Comaxit surface treatment for longer lifetime as protection against aggressive environment.



5,5 / 7,5 TRUCK (FD)

MOBILE SINGLE COLUMN HYDRAULIC LIFT – FIXED DISPLAY

Basic information

Advantages



Trucks, buses, agro machines

5500
7500

Loading capacity [kg]

1800

Maximal lifting high [mm]

14-22,5"
585-1160

Dimensions of taken-on tires - trucks [mm]

up 32"
1905

Dimensions of taken-on tires - agro machines [mm]

1,5

Motor [kW]

4 - 12

Columns



- LOADING CAPACITY 5500/7500 kg
- HYDRAULIC DRIVE HIGHLY EFFICIENT AND ECONOMICAL
- ELECTRONIC REGULATION AND SYNCHRONIZATION OF OPERATION OF THE LIFT
- INTEGRATED DISPLAY WITH CONTROL PANEL
- POSSIBILITY OF DISTANT CONTROL BY MEANS OF SIGNAL FROM THE RANGE OF 863-868 MHZ (ACCORDING TO ETSI)
- FUNCTION OF PRECISE ARRIVAL TO THE REQUIRED HEIGHT
- ACOUSTIC SIGNALIZATION, PRINT-OUT OF REPORTS
- LIFTING OF BROAD RANGE OF VEHICLES FROM DELIVERY VANS TO OFF-HIGHWAY TRUCKS
- CZECH MADE
- LIFTS ARE DESIGNED AND MANUFACTURED IN ACCORDANCE WITH ČSN EN 1493:2010



INTEGRATED DISPLAY WITH CONTROL PANEL



CONTROL PANEL



POWER PACK COVER WITH ELECTRO BOX



5,5 / 7,5 TRUCK (MT)

MOBILE SINGLE COLUMN HYDRAULIC LIFT – MOBILE TABLET

Advantages

Basic information



MOBILE TABLET



REMOTE CONTROL

- LOADING CAPACITY 5500/7500 kg
- HYDRAULIC DRIVE HIGHLY EFFICIENT AND ECONOMICAL
- ELECTRONIC REGULATION AND SYNCHRONIZATION OF OPERATION OF THE LIFT
- TABLET WITH A TOUCH SCREEN
- POSSIBILITY OF DISTANT CONTROL BY MEANS OF SIGNAL FROM THE RANGE OF 863-868 MHZ (ACCORDING TO ETSI)
- FUNCTION OF PRECISE ARRIVAL TO THE REQUIRED HEIGHT
- ACOUSTIC SIGNALIZATION, PRINT-OUT OF REPORTS
- LIFTING OF BROAD RANGE OF VEHICLES FROM DELIVERY VANS TO OFF-HIGHWAY TRUCKS
- CZECH MADE
- LIFTS ARE DESIGNED AND MANUFACTURED IN ACCORDANCE WITH ČSN EN 1493:2010



ELECTRO BOX + CONNECTOR FOR MOBILE TABLET

Trucks, buses, agro machines



Loading capacity [kg]

**5500
7500**

Maximal lifting high [mm]

1800

Dimensions of taken-on tires - trucks [mm]

**14-22,5"
585-1160**

Dimensions of taken-on tires - agro machines [mm]

**up 32"
1905**

Motor [kW]

1,5

Columns

4 - 12

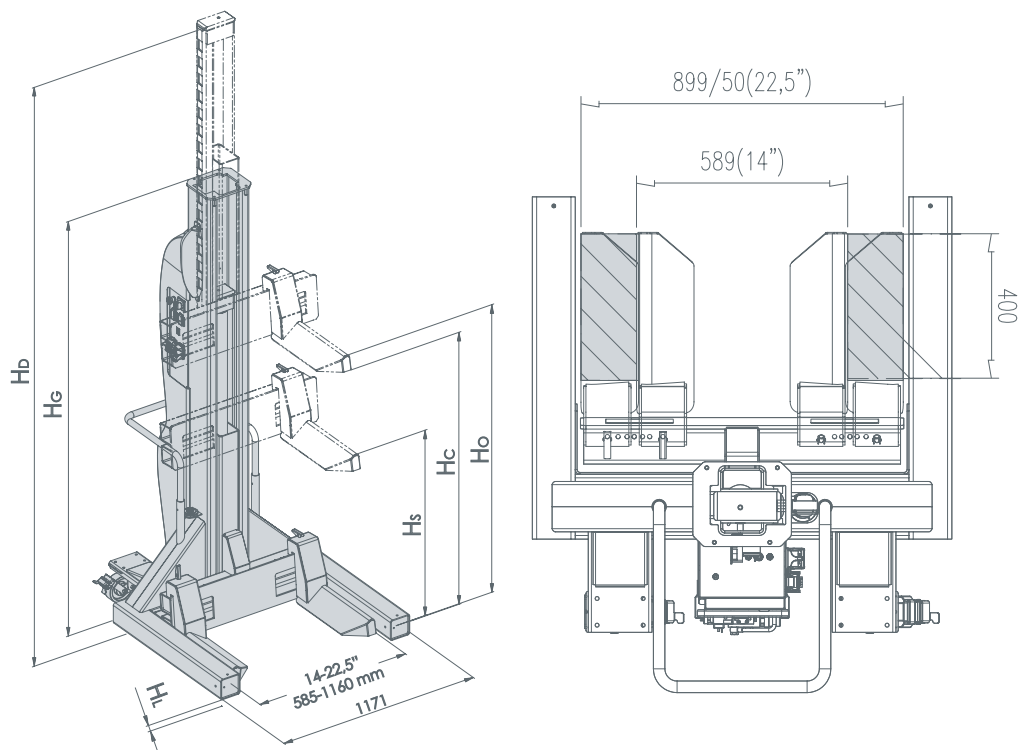




TECHNICAL DATA

AMI 5,5 TRUCK / 7,5 TRUCK

Technical drawing for mobile single column hydraulic lift



Packing dimensions

TYPE	LENGTH	WIDTH	HEIGHT	GROSS WEIGHT
AMI 5,5 / 7,5 TRUCK	1,4 m	1,25 m	2,8 m	520 kg

▪ right to make technical changes reserved

Technical data

	4 - 6 columns	8 - 12 columns	
Maximal lifting capacity of a separate post	5500 / 7500 kg		
Time of lifting	95 s		
Time of lowering	89 s		
Power supply network	TN-S 3/N/PE 400/230V AC, 50 Hz		
Motor of each post	1,5 kW		
Maximal electric input	15 kW	19 kW	
Maximal upstream protection	25A/C EN 60898-1 A	32A/C EN 60898-1 A	
Upstream protection for maximal loading capacity	20 A/C	25 A/C	25 A/C 32 A/C
Maximal lifting capacity of the lifting mechanism at full number of the posts	30 t	36 t	36 t 45 t
Outside dimensions of the post	1171 x 1378 x 2659 mm		
Dead weight of the post (net)	510 kg		
Maximal lifting high H_c	1800 mm		
Maximal height of the slides H_o	1918 mm		
Maximal height of taking-on by chassis H_s	1100 mm		
Headroom of the carriage unit of the non-loaded pillar H_L	23 mm		
Total height of the post H_G	2659 mm		
Dimensions of taken-om tires - trucks	14-22,5"/ 585-1160 mm		
Dimensions of taken-om tires - agro machines	up 32"/ 1905 mm		

▪ right to make technical changes reserved



TANDEM INTERCONNECTION

AMI 5,5 TRUCK / 7,5 TRUCK

Example of interconnection - fixed display 4 + 4 columns

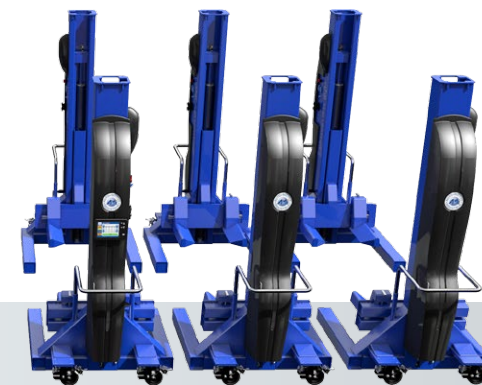
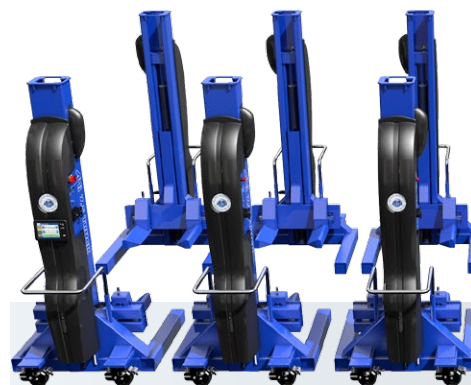
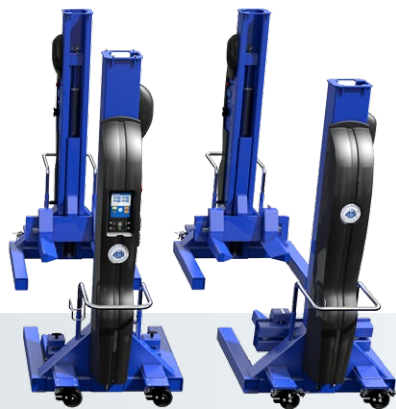
Example of interconnection - mobile tablet 6 + 6 columns

SET A

SET B

SET A

SET B





ACCESSORIES

MOBILE SINGLE COLUMN HYDRAULIC LIFT

Mobile tablet



- 391514-80-11

Remote control



- Independent remote control (suitable for fine regulation)
391514-80-09

Electro box on MASTER column



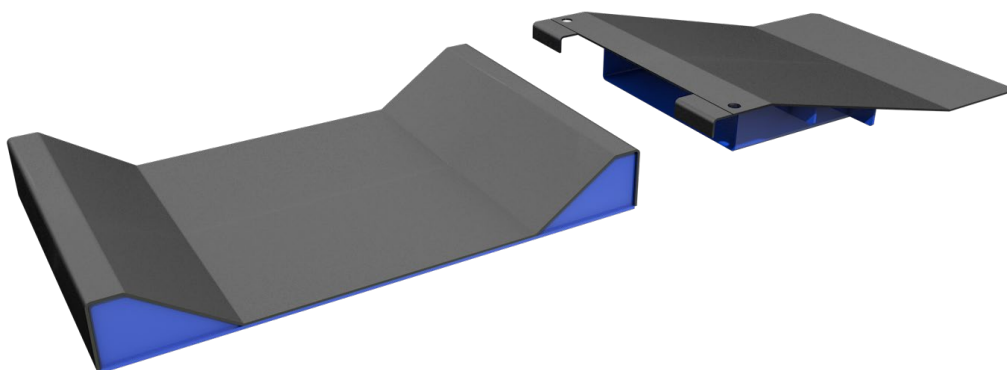
- 391514-80-03

Electro box on SLAVE column



- 391514-80-04

Agro - accessories



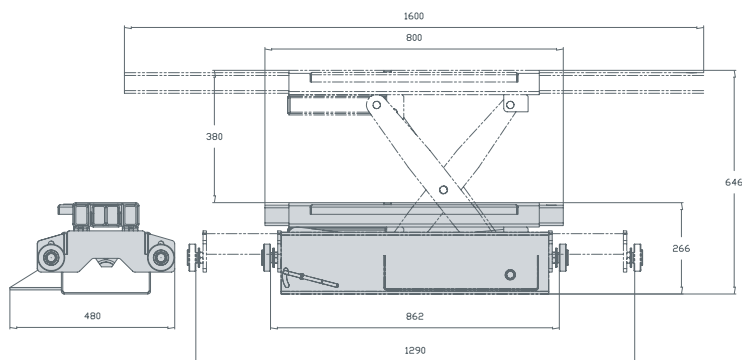
- 391220-00-00



J 2,0 / 2,5 RH / VH

HYDRAULIC JACKING BEAM

Basic information



Packing dimensions

TYPE	LENGTH	WIDTH	HEIGHT	GROSS WEIGHT
AMI J 2,5 RH, VH / AMI J 2,0 RH, VH	0,81 m	0,42 m	0,22 m	130 / 120 kg

• right to make technical changes reserved

Technical data for AMI J 2,0 / 2,5 RH / VH

	AMI J 2,5 RH, VH	AMI J 2,0 RH, VH
Maximum loading capacity	2500 kg	2000 kg
Maximum lifting time	23 sec.	17 sec.
Minimum lowering time	43 sec.	27 sec.
Working pressure	30 MPa	20 MPa
Oil viscosity	32 mm ² s ⁻¹	32 mm ² s ⁻¹
Net weight	130 kg	120 kg
Maximum arm distance	1600 mm	1600 mm
Maximum arm height	646 mm	545 mm
Minimum arm height	266 mm	190 mm
Minimum arm distance	800 mm	780 mm
Maximum track	1290 mm	1180 mm
Minimum track	862 mm	780 mm
Total length	1650 mm	1650 mm
Total width	480 mm	385 mm
Total height	681 mm	515 mm

- right to make technical changes reserved
- RH - with manual pump
- VH - with pneumatic pump





AUTO MOTIVE INDUSTRIAL a.s.
Sokolovská 1169, 570 01 LITOMYŠL
CZECH REPUBLIC

Tax ID: CZ 252 72 420
Reg. No: 252 72 420

Telephone: +420 461 618 555-7
Fax: +420 461 612 132
E-mail: info@automotive.cz
ami@automotive.cz

www.automotive.cz



EUROPEAN UNION
EUROPEAN REGIONAL DEVELOPMENT FUND
INVESTMENT IN YOUR FUTURE