

# UNISLIDE – Feeding system

## UNISLIDE impact bars – Product optimization/Applications



Alexander Sedler, Product Manager / Poing, August 2021

# The Product: UNISLIDE

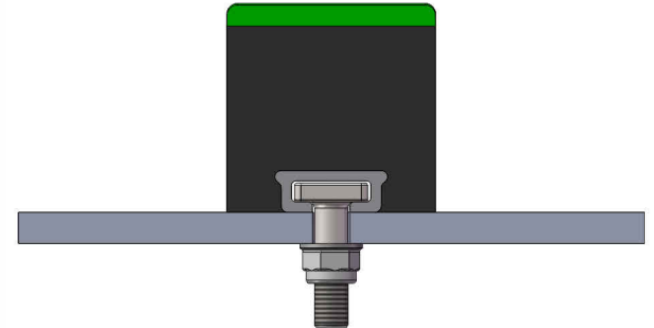


## Product:

UNISLIDE impact bars to avoid belt damage

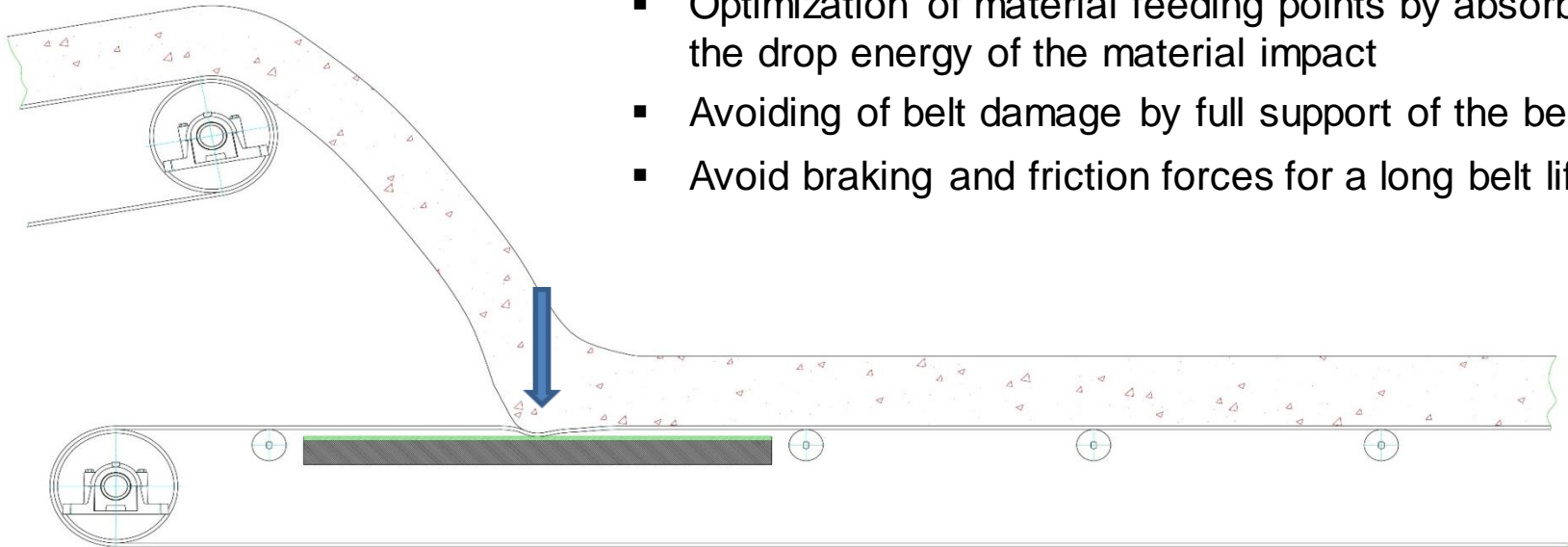
## Characteristics:

- Sliding surface made of polyethylene and highly elastic base made of rubber
- Bevelled ends to protect the belt
- Easy and quick mounting by integrated aluminum profile



## Customer Benefits:

- Optimization of material feeding points by absorbing the drop energy of the material impact
- Avoiding of belt damage by full support of the belt
- Avoid braking and friction forces for a long belt life



- The focus is often on the price, so the quality of the product, compared to our premium product REMASLIDE has to meet “only” standard requirements
- This is why we have optimized the UNISLIDE impact bars for volume production, which we offer now at very attractive conditions
  - Elastic rubber base (depending on the dimensions)
  - 10 mm sliding surface made of polyethylene

Designation	New Ref. number	Height [mm]	Width [mm]	Length [mm]
UNISLIDE 02	5399972	50	100	1.220
UNISLIDE 03	5399973	75	100	1.220
UNISLIDE 04	5399974	100	100	1.220

Discount
From 20 pieces
From 50 pieces
From 100 pieces
From 200 pieces
From 400 pieces

# Screw for UNIDSLIDE



## TT-Fastening Unit V – M 16 x 60 mm

- For use with impact bars with aluminum profile
- Consists of forged TT-Fasteners with washer and self-locking nut
- Interchangeable with TT-Fastening Unit I

Designation	New Ref. number	Dimensions
TT-Fastening Unit V	5391015	M 16 x 60 mm

Discount
From 80 pieces
From 200 pieces
From 400 pieces
From 800 pieces
From 1600 pieces



# Application Example: UNISLIDE in the loading belt for limestone gravel



**Material:** Limestone gravel (different grain sizes)

**Country:** Germany

**Problem:**

- Dust load from the material being conveyed, which impacts from a belt installed above.

**Solution:**

- On the recommendation of RTT, UNISLIDE 02 was installed in the feeding point

**Benefits for the customer:**

- Belt damage is avoided
- Less dust load
- Low-cost impact bars for standard requirements



**Impact bars in the loading belt for limestone gravel**

# Application Example: UNISLIDE in the loading belt for limestone gravel



View from above: Impact bars absorb the drop energy and improve the dust sealing



View from below: Aluminum profile with recommended four TT-Fastening Units

# Application Example: Combination UNISLIDE/REMASLIDE PUR in the hard coal industry



**Material:** Rocks after the washing process in the processing plant

**Country:** Germany

**Problem:**

- Problems with the load capacity with REMASLIDE LF

**Solution:**

- UNISLIDE (sides) + REMASLIDE PUR (center)

**Benefits for the customer:**

- Standard UNISLIDE for the lower load on the sides
- REMASLIDE PUR for areas with high loads
- Combination of the impact bars
  - For long service life
  - Cost savings



**Combination of the impact bars in the hard coal industry**



## Application Example: Combination UNISLIDE/REMASLIDE PUR in the hard coal industry

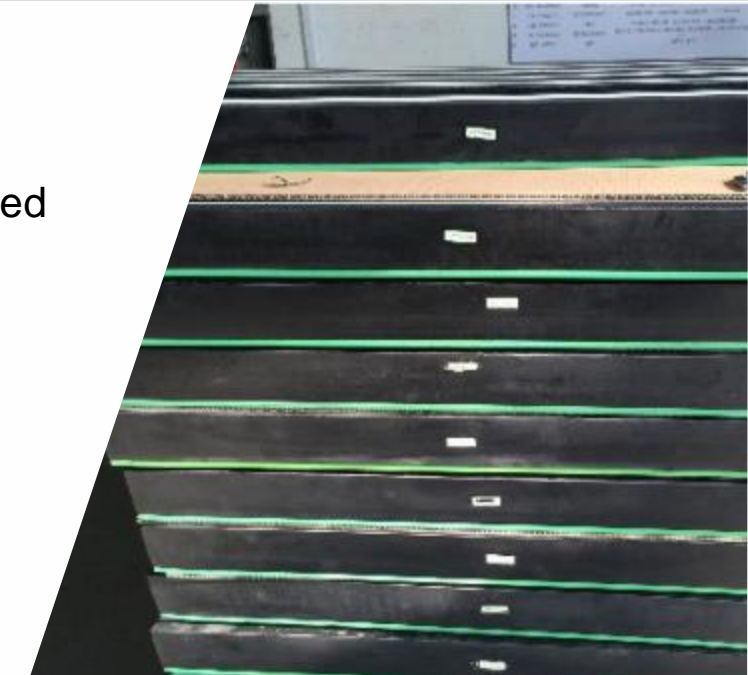


Side view of the impact bars and the impact cradle  
(manufactured by TIP TOP Borna, subsidiary Nauen)

# Application Example: Delivery to OEMs



- Material:** For standard requirements
- Country:** Worldwide
- Problem:** Cheap impact bars for OEMs are required
- Solution:** REMA TIP TOP UNISLIDE
- Benefits for the customer:**
- Cheap prices
  - Standard quality
  - Always in stock



**UNISLIDE impact bars on the way to the customer**

## Further uses of the UNISLIDE impact bars



Coal mine in  
Shanxi



Mine in  
Shandong



Power plant in Hubei

## Information

- Discount for the UNISLIDE impact bars
- TT-Fastening Unit V – M 16 x 60 mm for the use with impact bars with aluminum profile
- When installing the impact bars, it must be ensured that there is a distance of at least 20mm between the bars and the conveyor belt.

## Benefits for the customer:

- Optimization at the material feeding point
- Good conditions of standard quality

---

We count on your feedback and more user applications from the field!  
**Let us celebrate your achievements together!**



// ONE BRAND // ONE SOURCE // ONE SYSTEM

**REMA TIP TOP AG**

Gruber Straße 65 - 85586 Poing/Germany

Phone: +49 8121 707-100

Fax: +49 8121 707-10 222

info@tiptop.de

[www.rema-tiptop.com](http://www.rema-tiptop.com)

---