



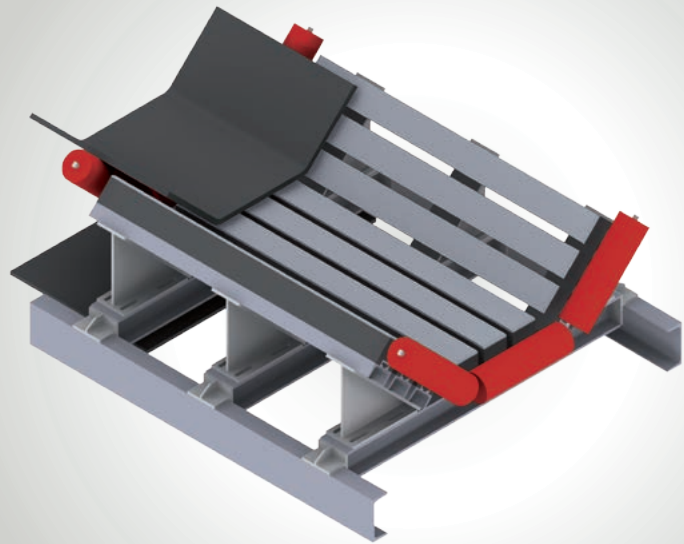
# REMASLIDE Impact Bars New Generation

**REMASLIDE impact bars with innovative sliding surface** and a shock absorber for conveyor belt feed points and transfer stations.

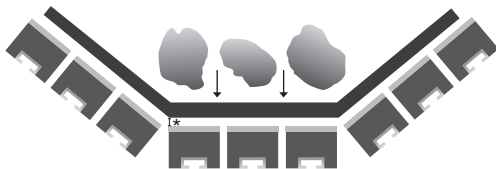
The **REMASLIDE impact bars** absorb the drop energy of material impact through their proven TIP TOP special rubber substrate.

By fully supporting the conveyor belt across the feed points and transfer stations, damage of the belt will be avoided.

By the use of an innovative polyethylene sliding layer with a very low frictional resistance, energy requirement is reduced and the conveyor belt is protected.



Feed point with REMASLIDE impact bars



\*The recommended distance between the conveyor belt and impact bars is about 20 mm in the unloaded condition. This distance is achieved by roller stations before and behind the impact bars.

## Advantages

- Innovative sliding surface
- Low frictional resistance
- Reduced energy requirement
- Long service life
- High wear resistance
- Beveled ends of the polyethylene layer to protect the conveyor belt
- Elastic substructure from proven TIP TOP special rubber to absorb the impact energy
- Easy and quick mounting by integrated steel profiles with TT mounting system
- Also available in ATEX-version
- Available in 3 different sizes for light, medium and heavy duty operating conditions



ONE BRAND – ONE SOURCE – ONE SYSTEM

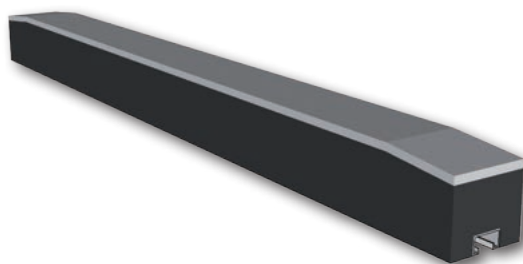


Industrie

# Productprogram

## REMASLIDE LF (Low Friction)

Impact bar with newly-developed low-friction sliding surface made from highly wear-resistant extra high molecular polyethylene, increases the service life by more than 30% compared to other standard impact bars. Reduced frictional forces, allow significant reduction of energy requirements and preserves the running side of the conveyor belt.



Ref. No.	Designation	Dimensions
539 0510	REMASLIDE LF KG-02	52 x 100 x 1220 mm
539 0520	REMASLIDE LF KG-03	80 x 100 x 1220 mm
539 0530	REMASLIDE LF KG-04	100 x 100 x 1220 mm

## REMASLIDE ATEX

Impact bars have a surface resistance and volume resistivity of  $< 1 \times 10^9 \Omega$  and are therefore classed as anti-static and thus suitable for use in ATEX areas.



Ref. No.	Designation	Dimensions
539 0420	REMASLIDE ATEX KG-02	52 x 100 x 1220 mm
539 0440	REMASLIDE ATEX KG-03	80 x 100 x 1220 mm
539 0400	REMASLIDE ATEX KG-04	100 x 100 x 1220 mm

## TT-Fastening Units IV

TT-Fastening Units IV consists of TT fasteners with washer and self-locking nut. Recommendation: 4 fasteners per bar.

Ref. No.	Designation	Dimensions
539 3561	TT-Fastening Units IV	M 16 x 40 mm
539 3468	TT-Fastening Units IV	M 16 x 60 mm
539 3475	TT-Fastening Units IV	M 16 x 80 mm

**REMA TIP TOP GmbH**  
Business Segment Material Processing

Gruber Strasse 63  
85586 Poing  
Germany

Phone: +49 8121 70710-245  
Fax: +49 8121 70710-222  
[www.rema-tiptop.com](http://www.rema-tiptop.com)

Your local contact:

582 0751 - XI.13 Printed in Germany

