



// ONE BRAND // ONE SOURCE // ONE SYSTEM

REMALINE 35 - Premium quality for wet wear and build-up

REMA TIP TOP's high-quality **REMALINE** lining offers optimum surface protection for your machinery and equipment while minimizing production downtime, reducing maintenance costs, and increasing productivity.

APPLICATION AREAS

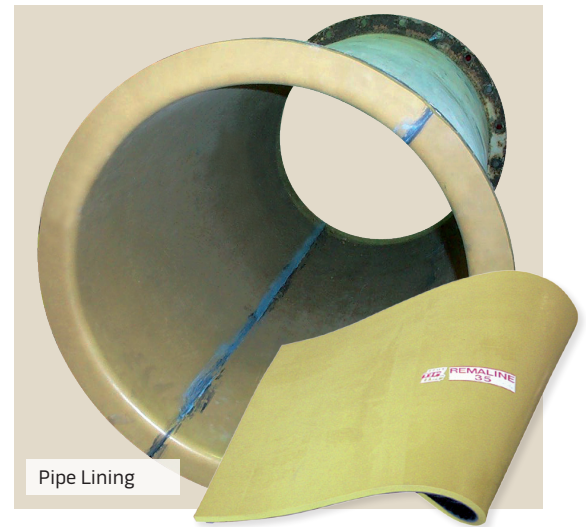
REMALINE 35 is an highly elastic natural rubber compound with excellent resistance to wet abrasion and sharp particles. The properties of **REMALINE 35** make it the optimum rubber lining for sand and gravel industry equipment as well as in the glass industry. **REMALINE 35** has also proven valuable with sticky material such as loam and clay.

TYPICAL FIELDS OF USE

- Pipe linings, pumps, cyclones, discharge boots for ready-mix concrete plants
- Tank and chute linings for sticky materials such as mud and clay
- Slides, gutters and aprons
- Loader bucket lining to prevent build-up

ADVANTAGES

- Build-up elimination
- Noise reduction
- Easy and fast installation
- Increases the efficiency of your equipment
- Technical consultation and data available anytime



TECHNICAL PROPERTIES

| | | |
|-------------------------|---|--|
| Product characteristics | REMALINE 35, consisting of 95% natural rubber, is a material with extraordinarily high elasticity and stretching properties. | |
| | CN bonding layer: REMALINE 35 comes equipped with a CN bonding layer, which affords the product an extremely good adhesive quality in combination with the REMA TIP TOP adhesive systems. | |
| Storage stability | Max. 24 months At 77°F ± 3.6°F with no loss in quality Subject to DIN regulation 7716 | |
| Color | | Yellow |
| Polymer | DIN ISO 1629 | NR |
| Hardness | DIN ISO 7619-1 | 33 Shore A |
| Abrasion | DIN ISO 4649 | 150(5N) mm ³ |
| Specific Weight | DIN EN ISO 1183-1 | 0.96 g/cm ³ (59.93 lb/ft ³) |
| Tensile Strength | DIN 53 504 | 16 N/mm ² |
| Elongation at break | DIN 53 504 | 790% |
| Resilience Elasticity | DIN 53 512 | 78% |
| Tear Growth Resistance | ISO 34-1 Method A | 8 N/mm |
| Available sizes* | Standard thickness | 1/8", 3/16", 1/4", 5/16", 3/8", 1/2", 5/8", 3/4", 1" |
| | Standard width | 5', 6½' |

*Other sizes available on request. REMALINE 35 is also available with fabric reinforcement.

REMA TIP TOP/North America, Inc.

1500 Industrial Blvd. · Madison, GA 30650 · Phone 800.334.REMA (7362) · 706.752.4000 · Fax 706.752.4015 → www.rematiptop.com