

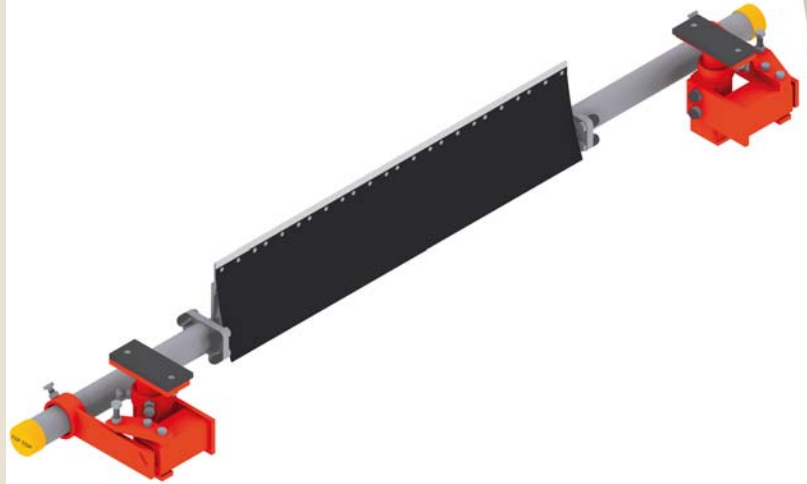


Industrie

# REMACLEAN HM-U1

REMACLEAN HM-U1 is a belt cleaning system for belt return side applications consisting of tungsten carbide segments.

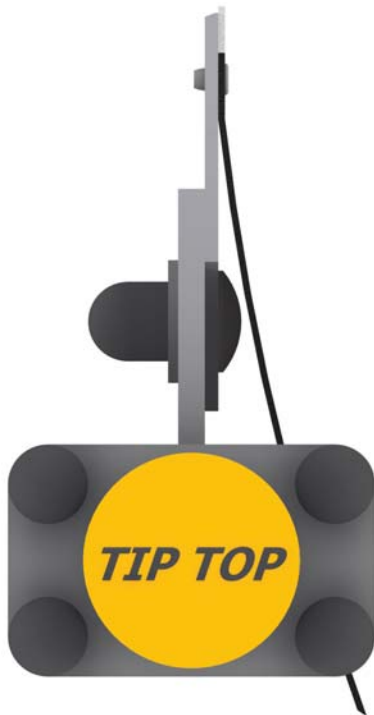
**REMACLEAN HM-U1** is universally applicable for many types of materials. The solid design of the support tube, where the tungsten carbide segments are mounted, and the spindle-type tension unit allow the system to be used for belt speeds up to 4.5 m/s. The design of the carbide blade perfectly adjusts to the belt, thus providing an effective and belt-friendly cleaning. The design of the carbide blade, as well as its anti-caking coating made of polyethylene, guarantee extended service life and high reliability.



REMACLEAN HM-U1

## Advantages

- Superior cleaning performance
- Long service life achieved by premium carbides
- Modular system consisting of support tube, carbide segments, support tube extensions and spindle-type tension units
- Constant and ideal contact pressure that is easy to adjust
- Arbor kits can be mounted inside or outside the conveyor construction
- Adjustable by one person without special knowledge
- Damage of the belt edges is prevented by rounded outer carbide segments
- Can be upgraded for use in shuttle belt operation
- Special version for temperatures up to 120° is optional
- For belt speeds up to 4.5 m/s



ONE BRAND – ONE SOURCE – ONE SYSTEM

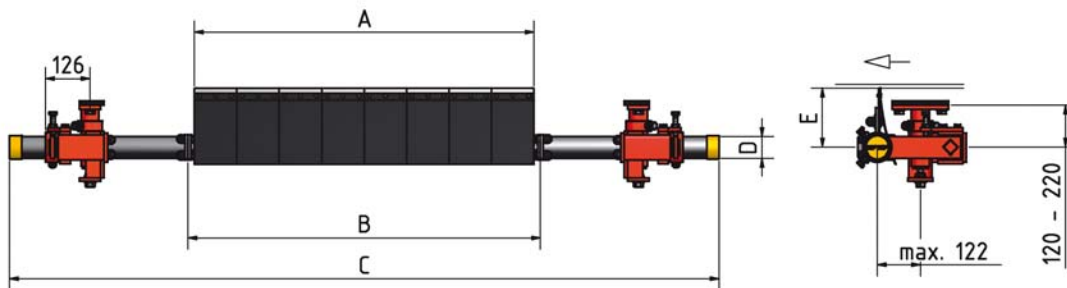
# REMACLEAN HM-U1

## Technical data

Belt width (mm)	Cleaning width (mm)	Length of system support tube* (mm)	Length of support tube (mm)	Diameter of support tube (mm)	Height of scraper blade (mm)	CCC** L=120 mm (units)
	"A"	"B"	"C"	"D"	"E"	
400	360	396	1400	51	160	3
500	480	516	1500	51	160	4
650	600	636	1650	51	160	5
800	720	756	1750	63	167	6
1000	960	996	2000	63	167	8
1200	1080	1120	2700	76	175	9
1400	1200	1240	2900	76	175	10
1600	1440	-	3100	101.6	183	12
1800	1680	-	3300	101.6	183	14
2000	1800	-	3500	101.6	183	15
2200	2040	-	3750	101.6	183	17
2400	2280	-	4000	101.6	183	19

\* B = C as from belt width 1600

\*\* CCC = Cemented carbide cores



REMA TIP TOP GmbH  
Business Unit Industrie

Gruber Strasse 63  
Phone:  
Fax:  
www.rema-tiptop.com

85586 Poing/Germany  
+49 8121 707-245  
+49 8121 707-222  
info@tiptop.de